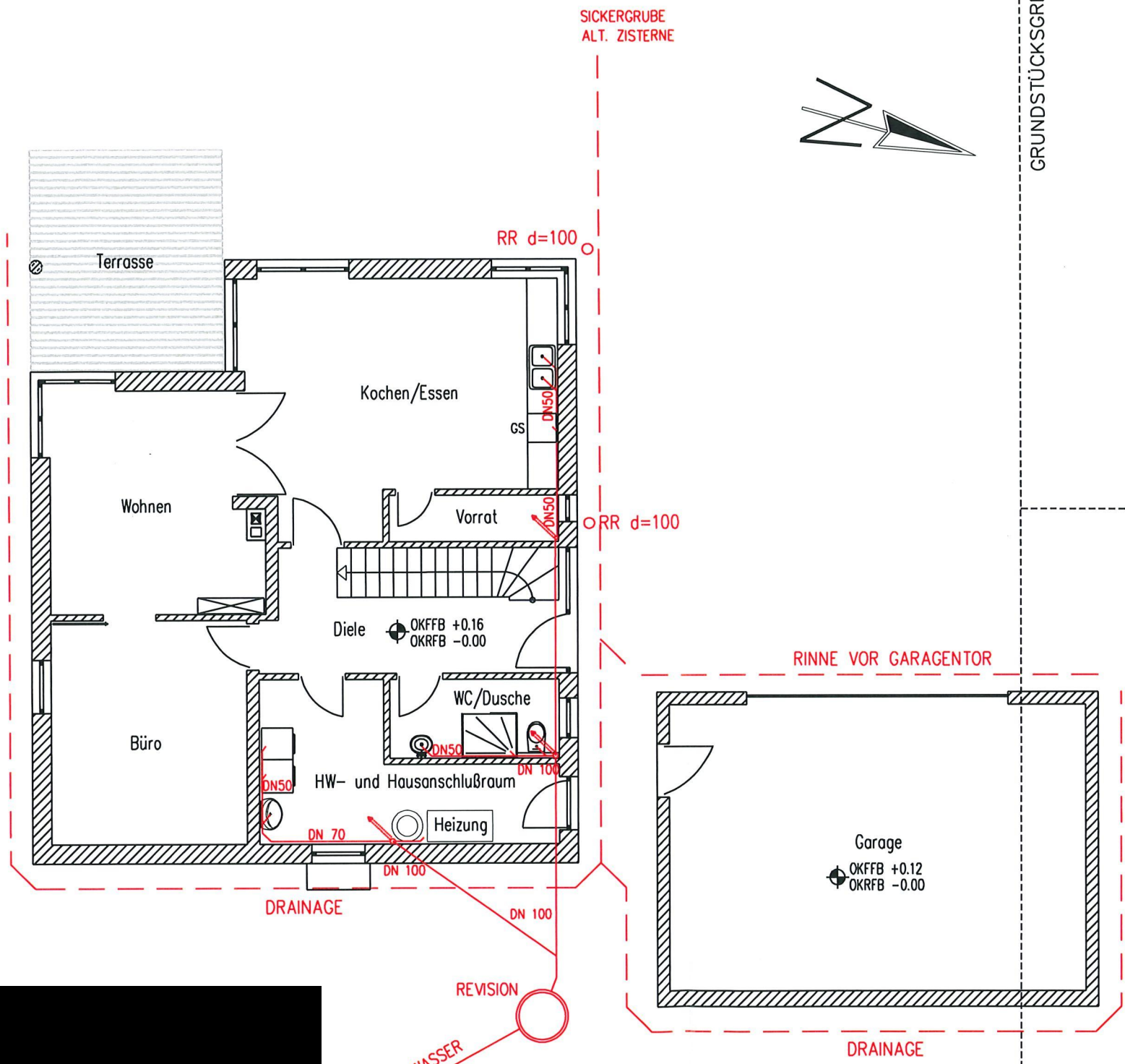
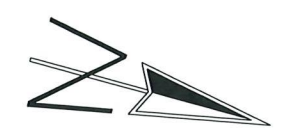


SCHMUTZWASSER ———

REGENWASSER - - - - -

GRUNDSTÜCKSGRENZE

GRUNDSTÜCKSGRENZE



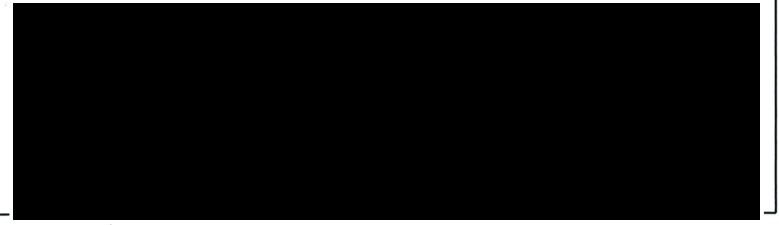
SCHMUTZWASSER ———
REGENWASSER - - - - -

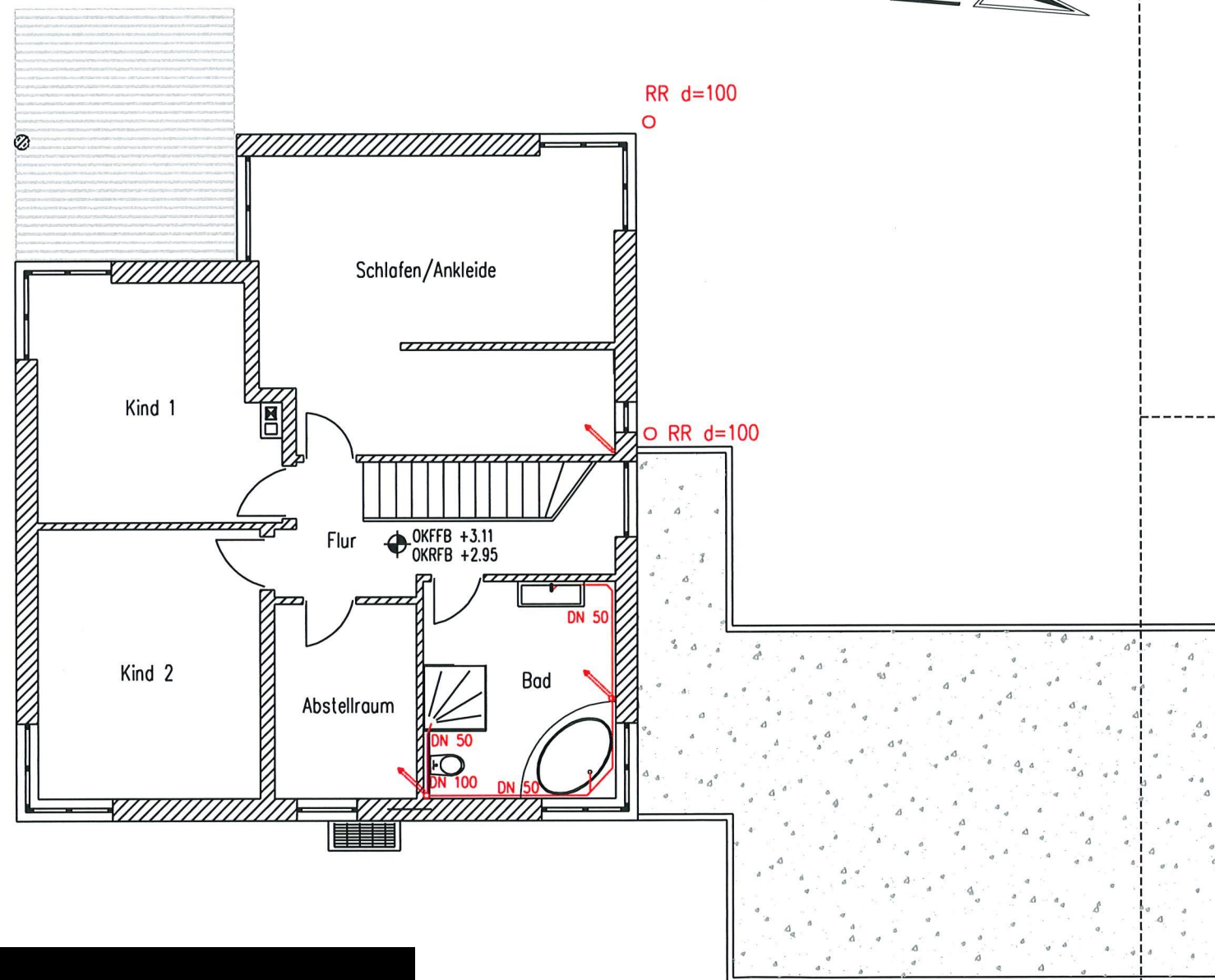
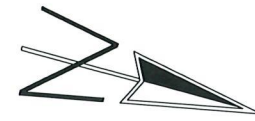


BESTEHENDER ABWASSERKANAL

SOONWALDSTRASSE

ENTWÄSSERUNGSVORSCHLAG EG



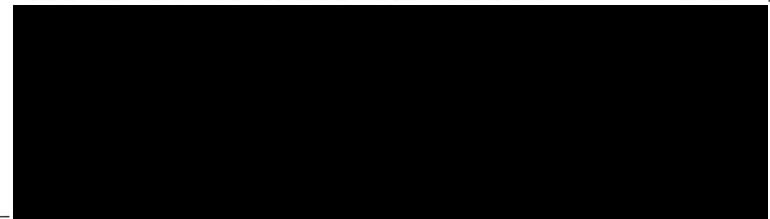
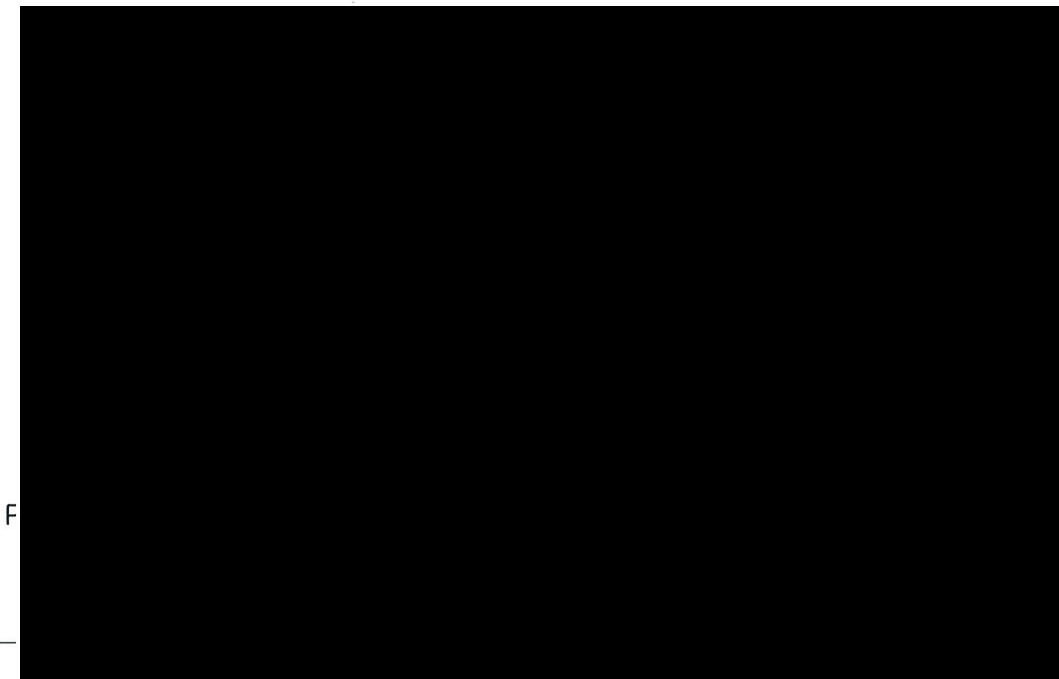


SCHMUTZWASSER ———
REGENWASSER - - - - -

EINFAHRT ↑

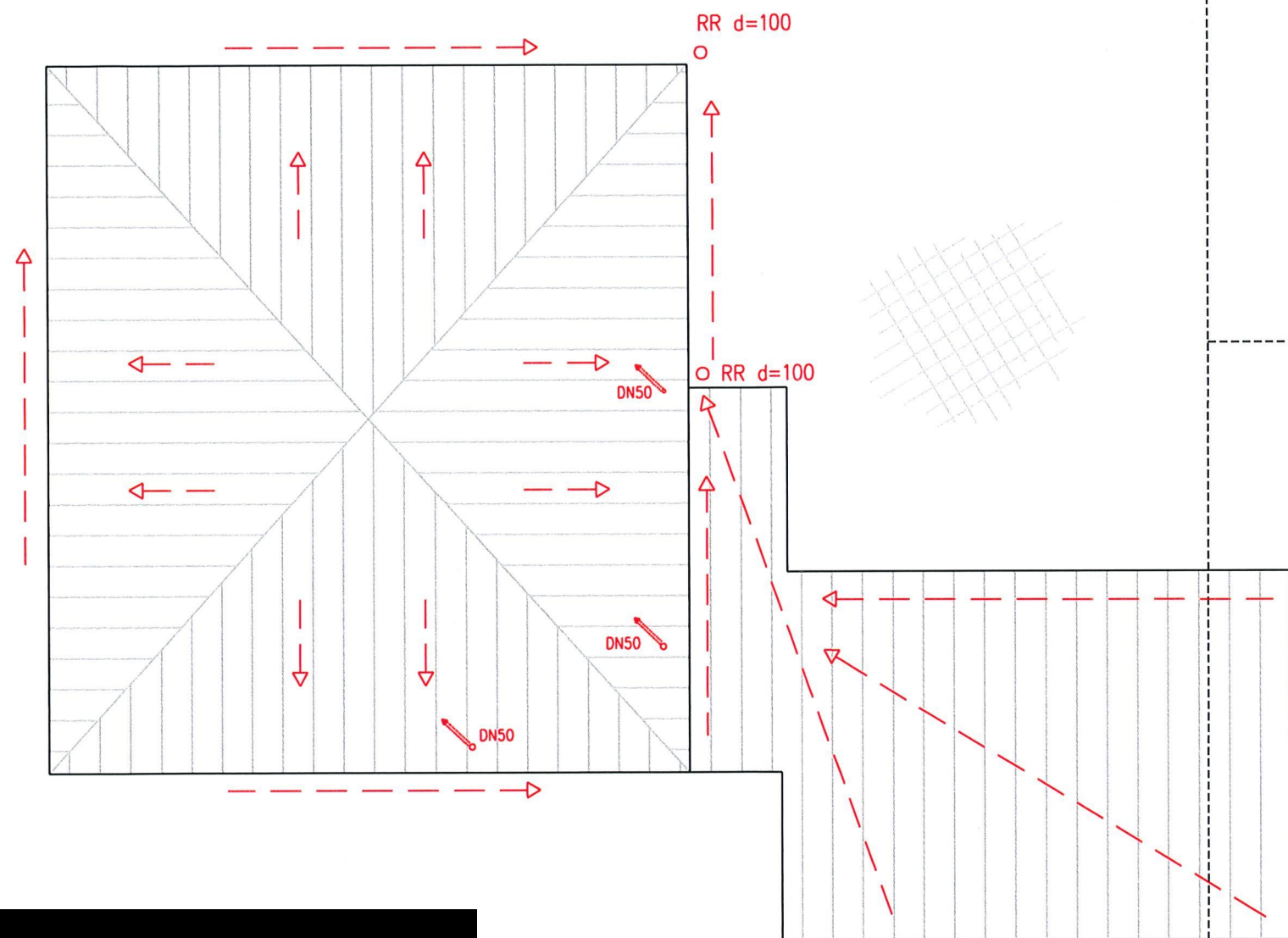
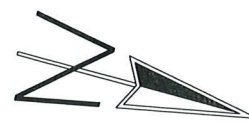
SOONWALDSTRASSE

ENTWÄSSERUNGSVORSCHLAG OG



GRUNDSTÜCKSGRENZE

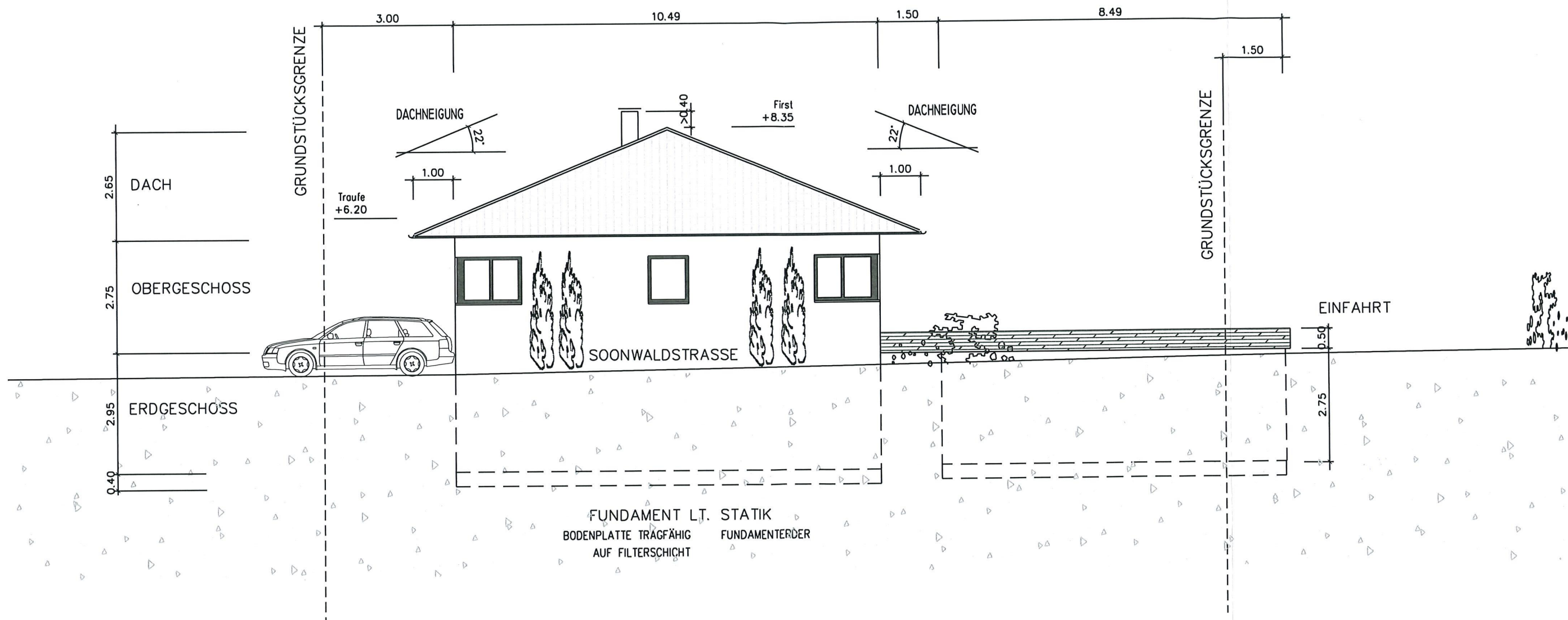
GRUNDSTÜCKSGRENZE



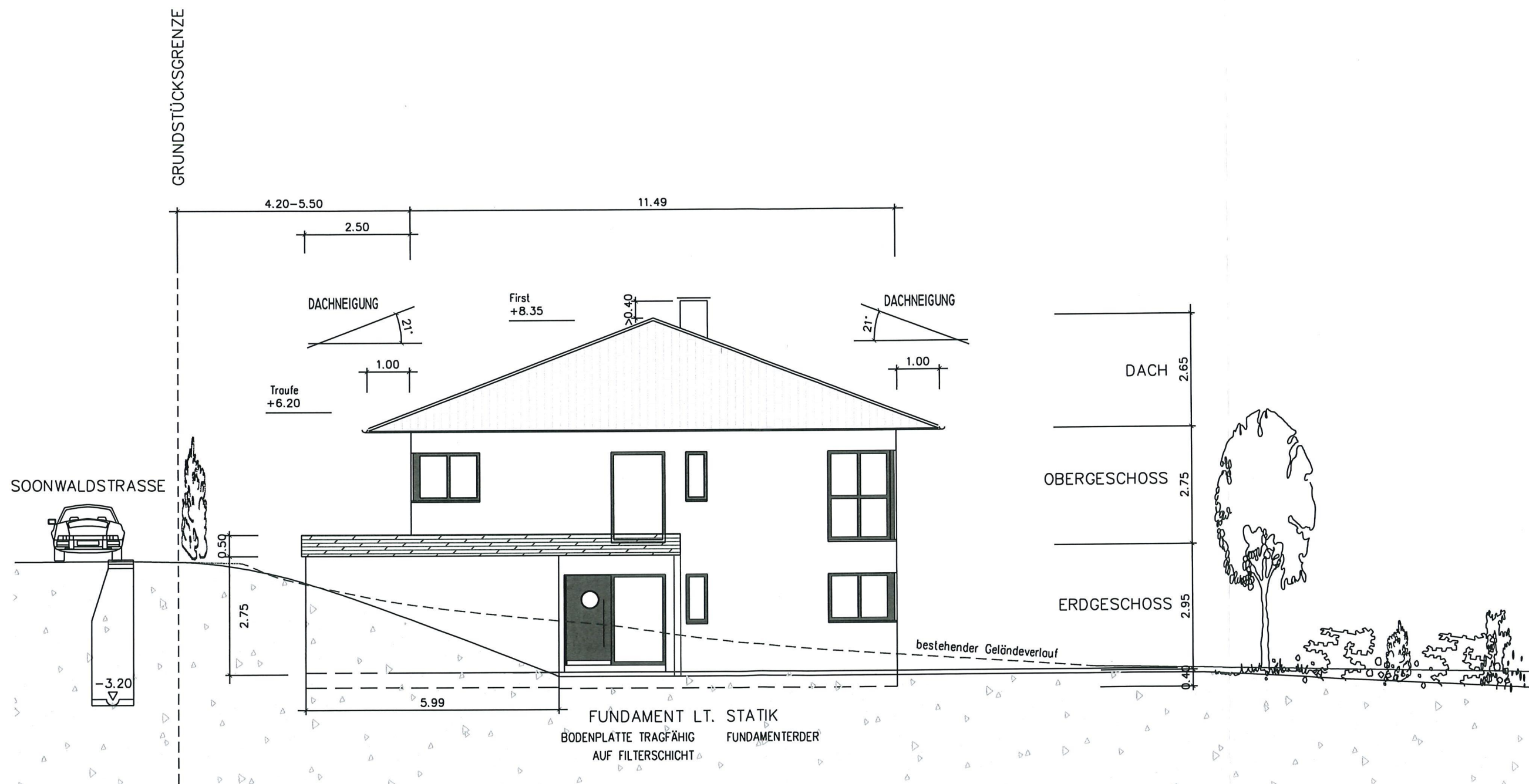
SCHMUTZWASSER ———
REGENWASSER - - - - -

SOONWALDSTRASSE

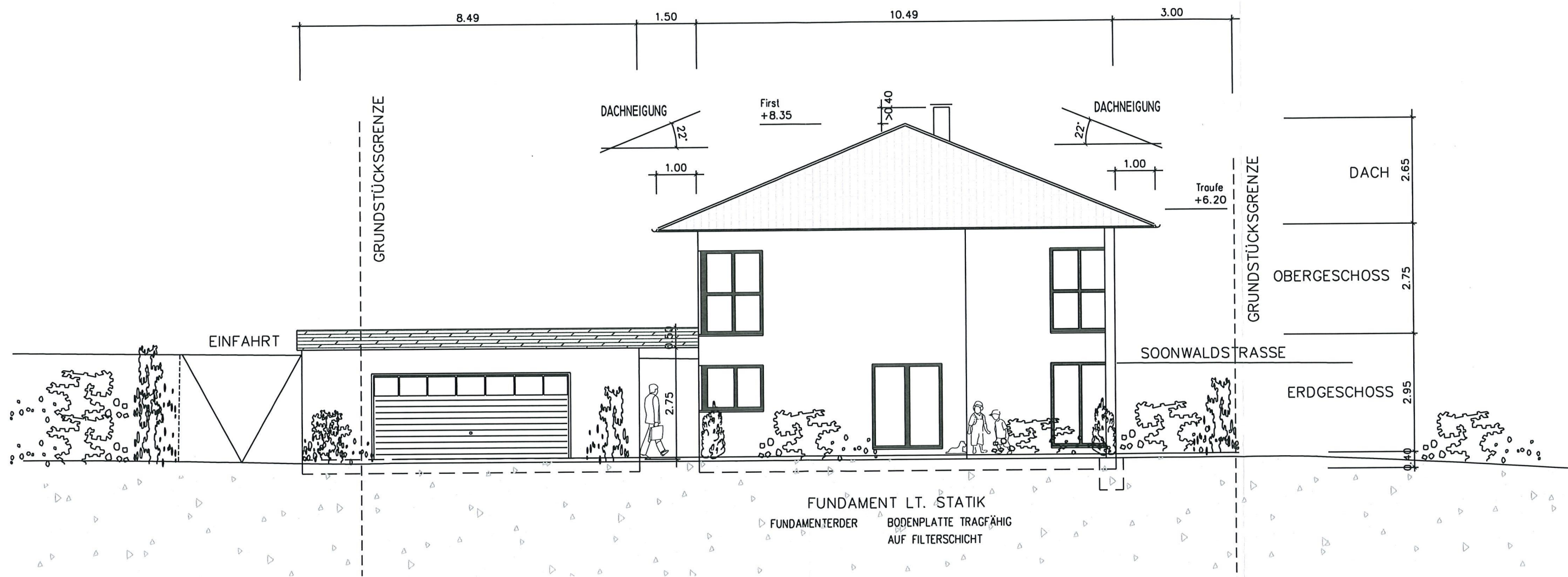
ENTWÄSSERUNGSVORSCHLAG DACH



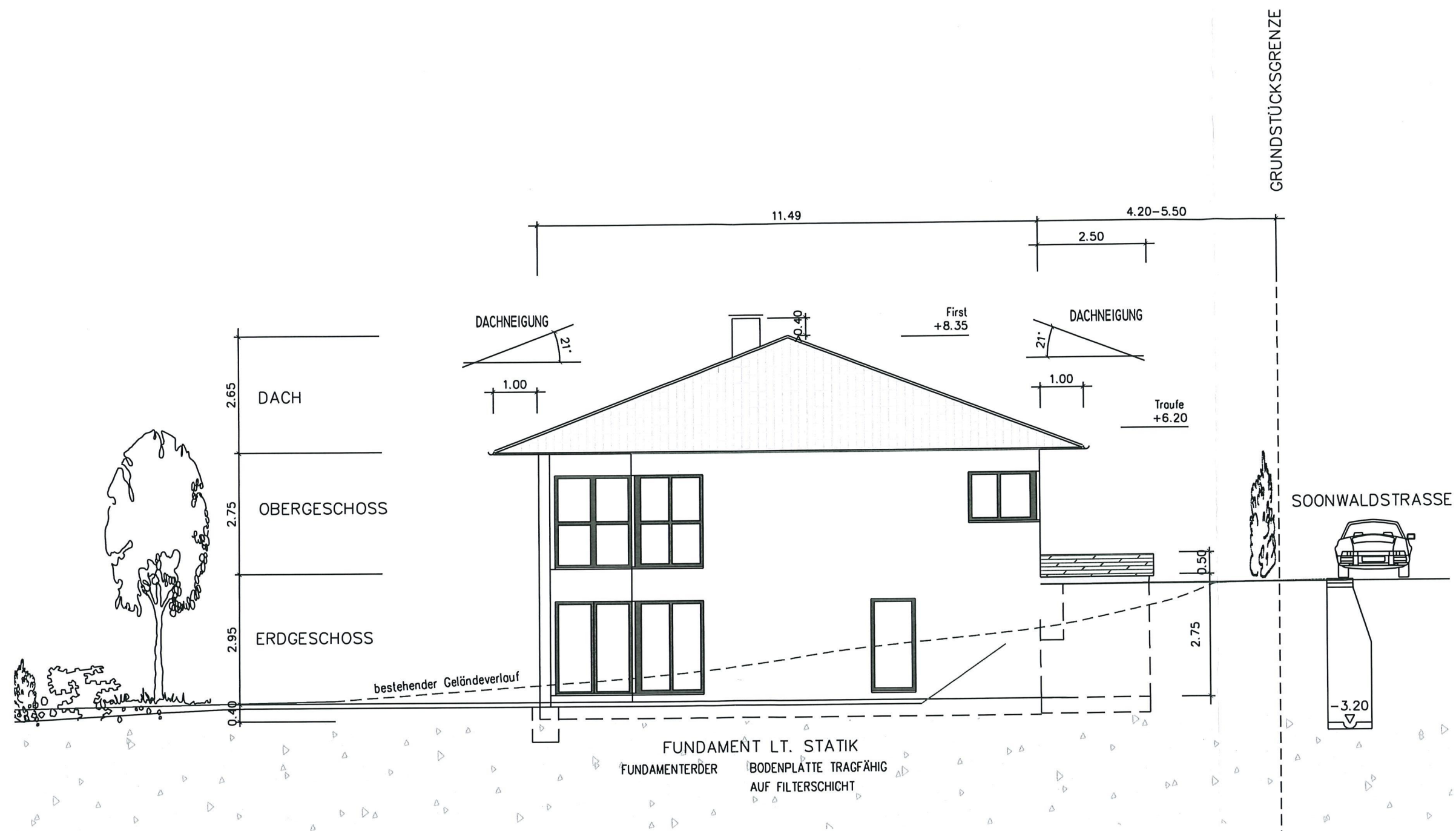
ANSICHT OSTEN



ANSICHT NORDEN



ANSICHT WESTEN

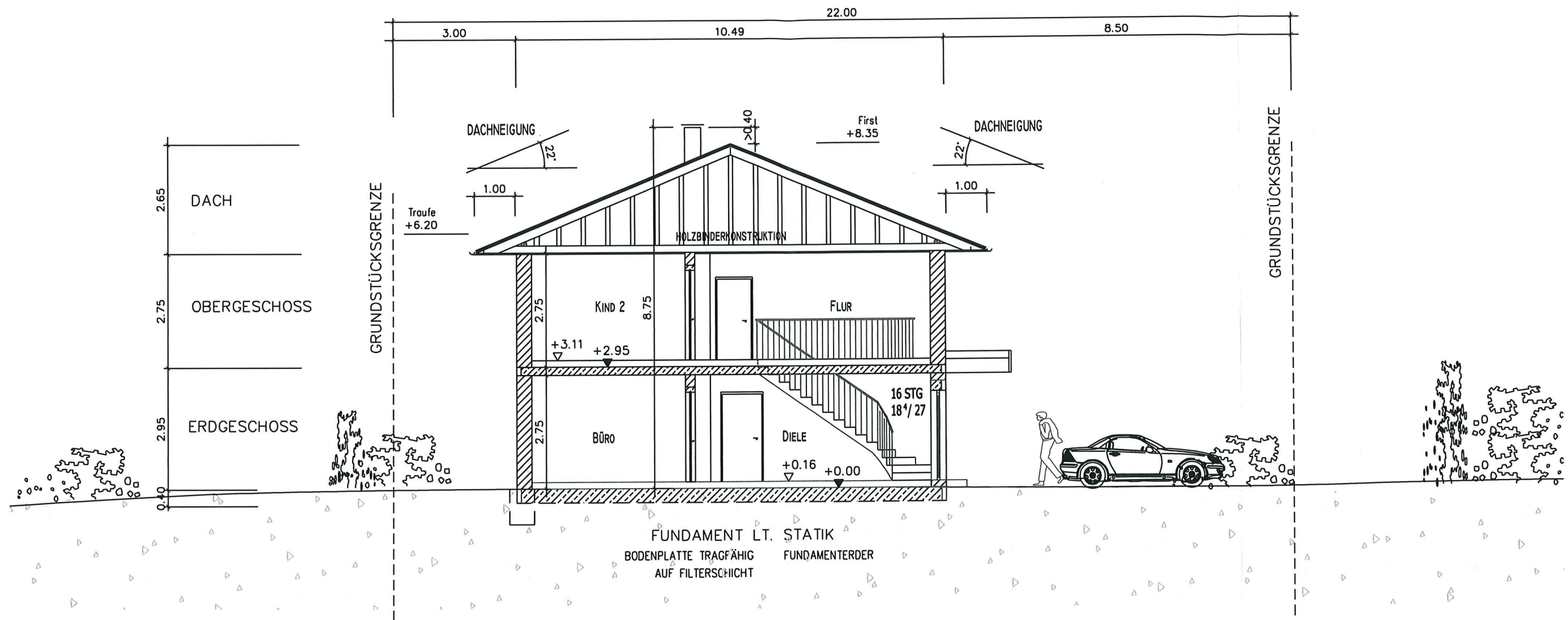


GRUNDSTÜCKSGRENZE

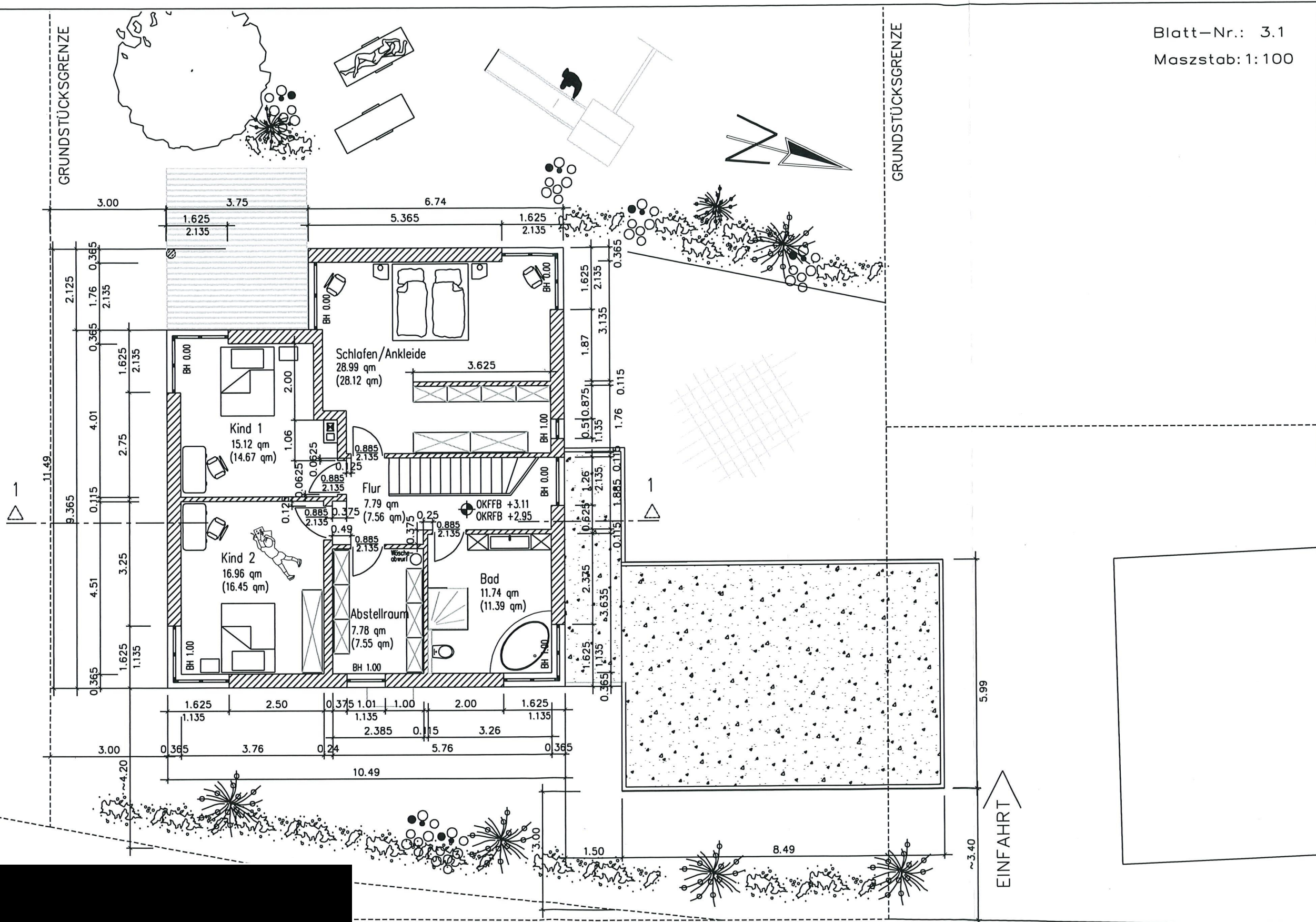
SOONWALDSTRASSE

FUNDAMENT LT. STATIK
FUNDAMENTERDER
BODENPLATTE TRAGFÄHIG
AUF FILTERSCHICHT

ANSICHT SÜDEN



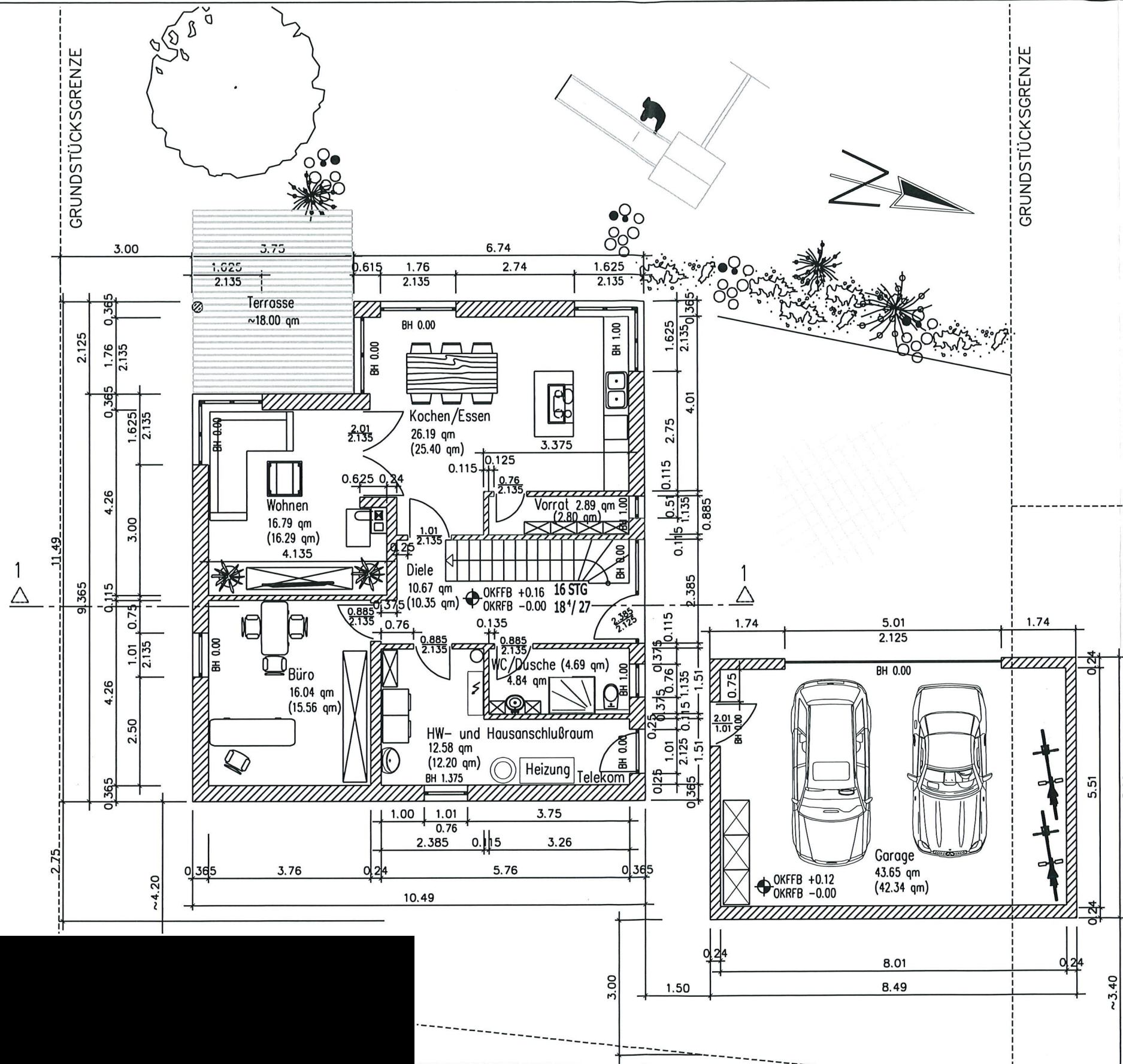
ALLE BRÜSTUNGS- UND TÜRÖFFNUNGSMASZE
BEZIEHEN SICH AUF OBERKANTE FFB !!



SOONWALDSTRASSE

GRUNDRISS OBERGESCHOSS

ALLE BRÜSTUNGS- UND TÜRÖFFNUNGSMASZE
 BEZIEHEN SICH AUF OBERKANTE FFB !!



GRUNDRISS ERDGESCHOSS

ALLE BRÜSTUNGS- UND TÜRÖFFNUNGSMASZE
 BEZIEHEN SICH AUF OBERKANTE FFB !!