

### Zeichenerklärung:

#### Ver- und Entsorgung

- Kanaldeckel ( rund )
- Kanaldeckel ( eckig )
- Gully
- Hydrant
- Wasserschieber
- Gasschieber
- Stromkasten/-anschluss
- Elektrische Anlage
- Schacht
- Mülleimer
- Kabelstein
- Laterne



#### Verkehr

- Absperrpfosten
- Verkehrszeichen / Schild
- Ampel / Lichtzeichen

#### Masten, Anlagen

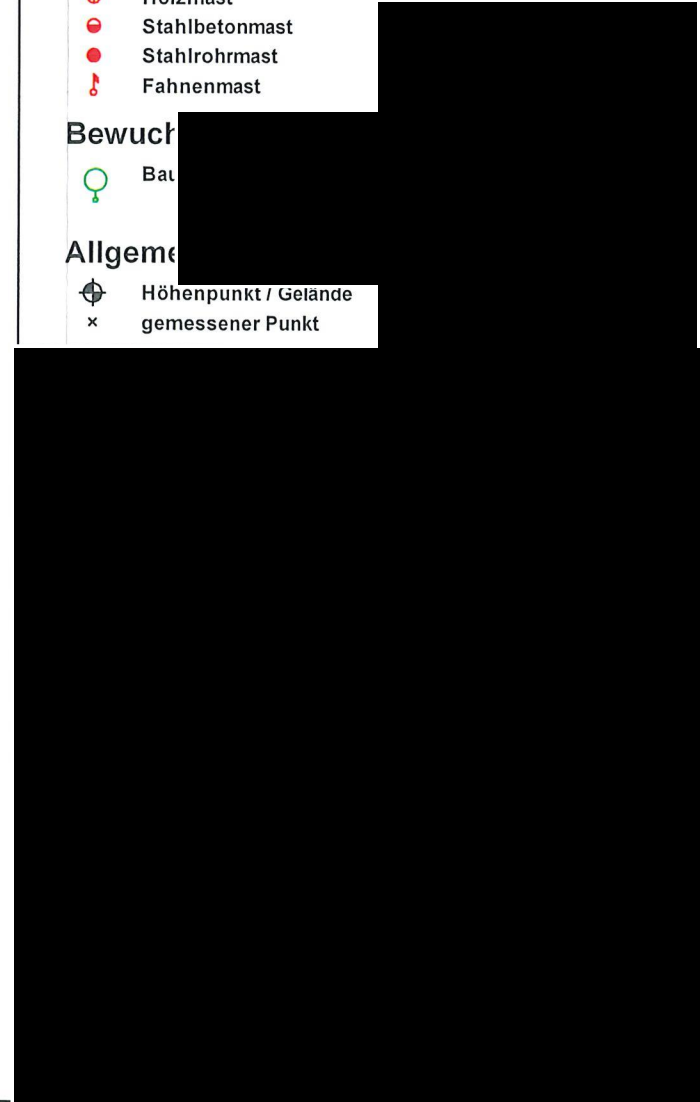
- Holzmast
- Stahlbetonmast
- Stahlrohrmast
- Fahnenmast

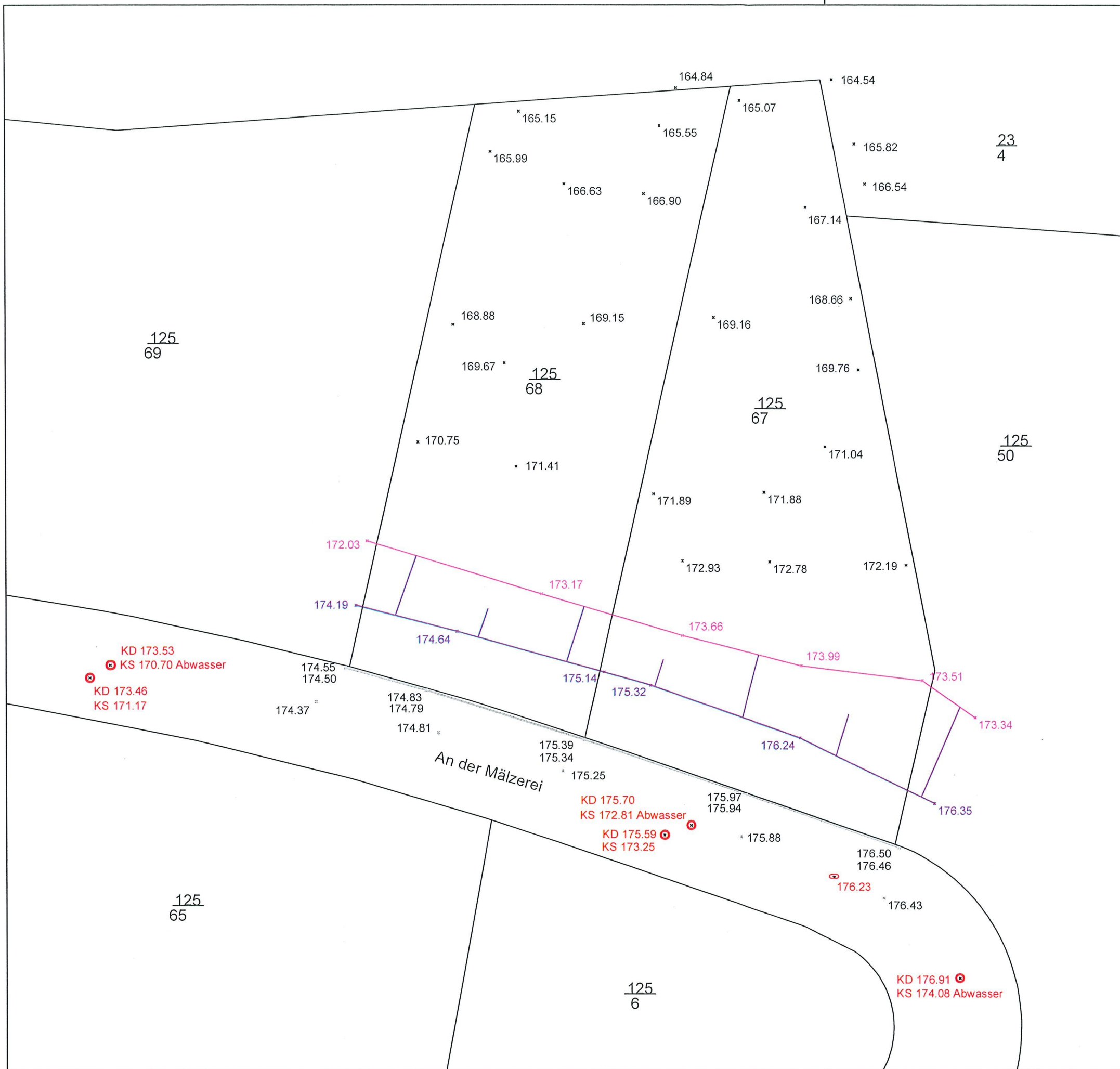
#### Bewuch

- Bau

#### Allgeme

- Höhenpunkt / Gelände gemessener Punkt





### Zeichenerklärung:

#### Ver- und Entsorgung

- Kanaldeckel ( rund )
- Kanaldeckel ( eckig )
- Gully
- Hydrant
- Wasserschieber
- Gasschieber
- Stromkasten/-anschluss
- Elektrische Anlage
- Schacht
- Mülleimer
- Kabelstein
- Laterne



#### Verkehr

- Absperrpfosten
- Verkehrszeichen / Schild
- Ampel / Lichtzeichen

#### Masten, Anlagen

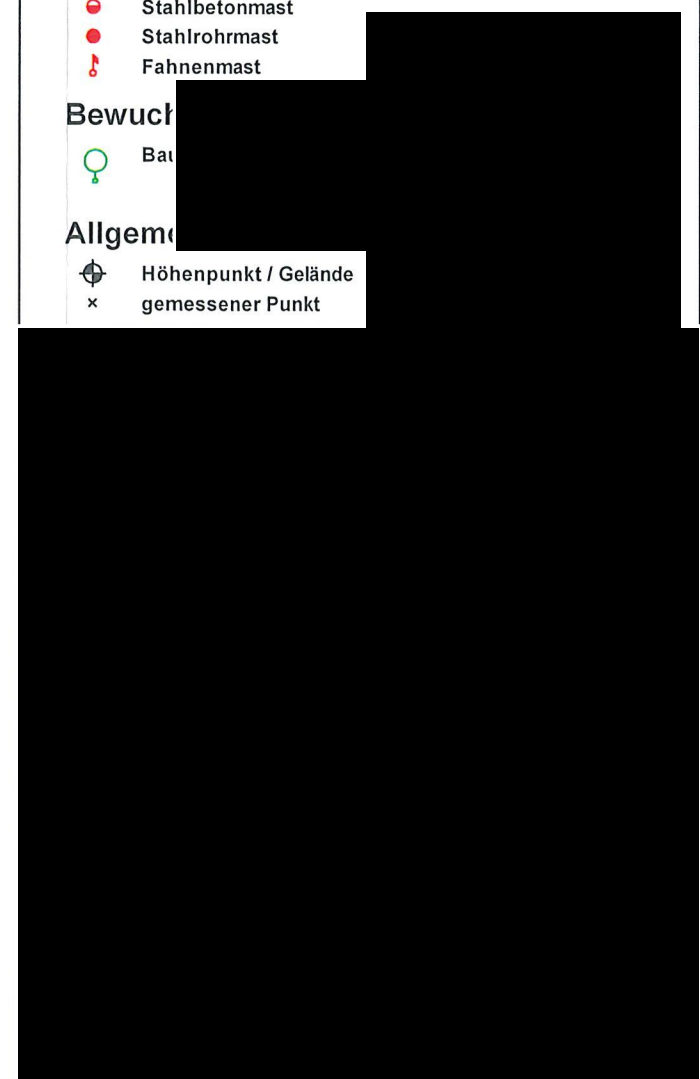
- Holzmast
- Stahlbetonmast
- Stahlrohrmast
- Fahnenmast

#### Bewuch

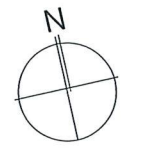
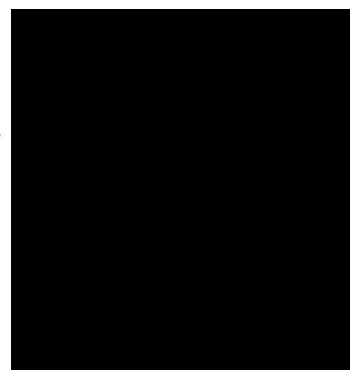
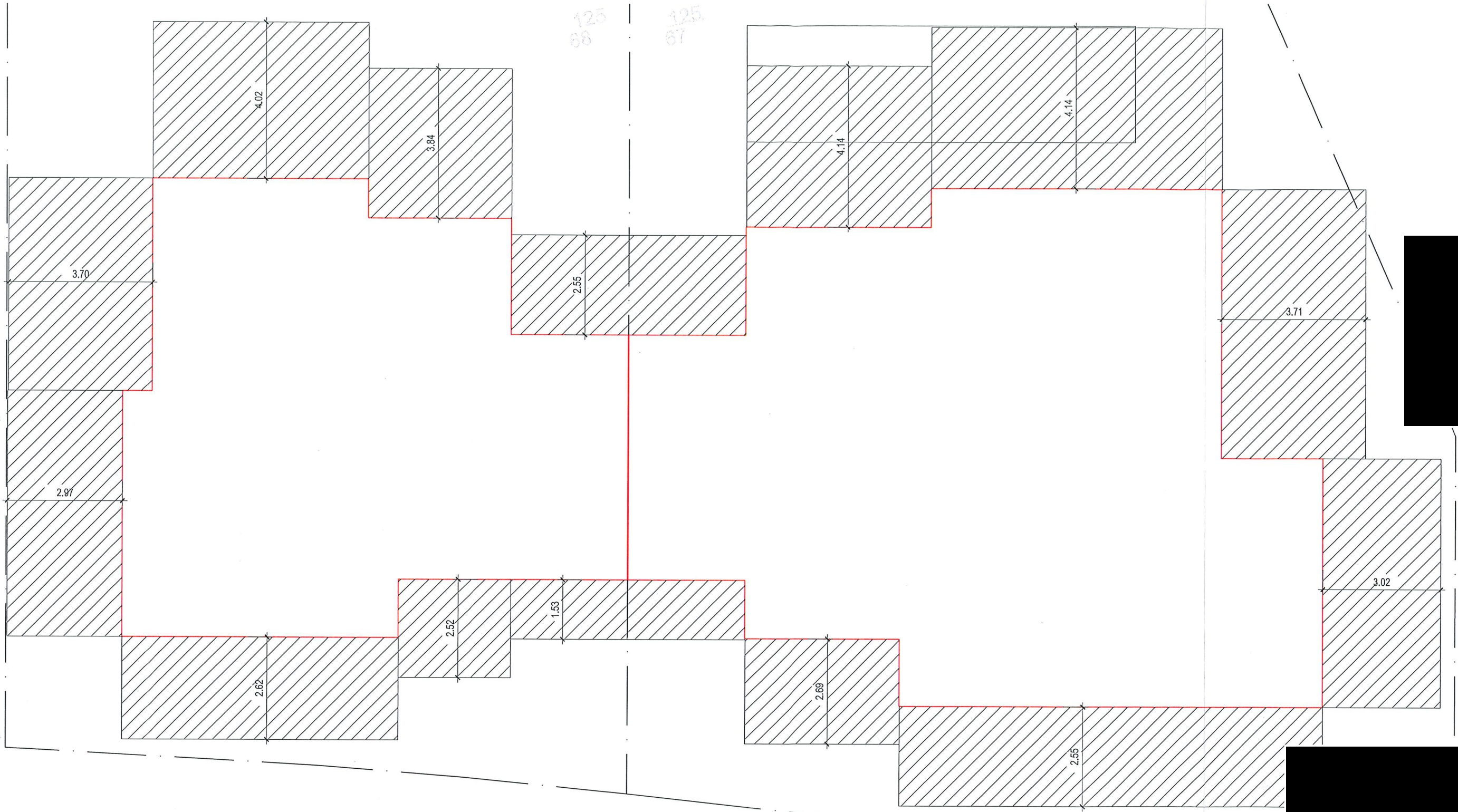
- Ba...

#### Allgeme

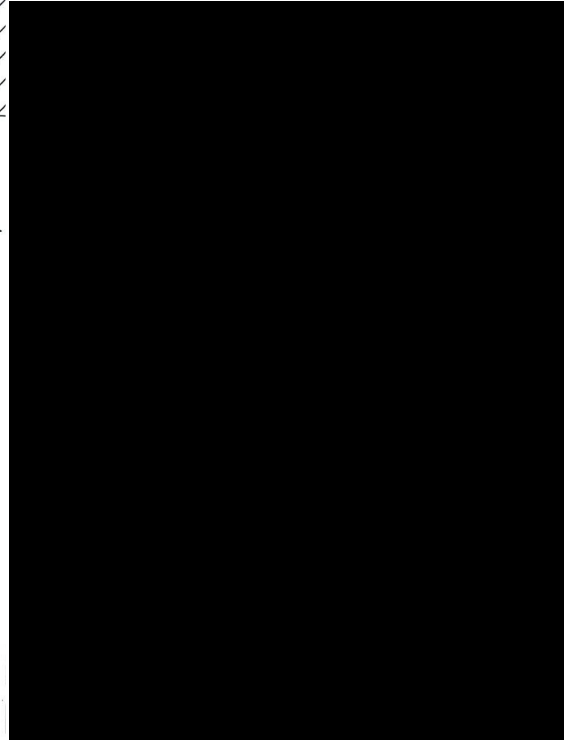
- Höhenpunkt / Gelände gemessener Punkt
- gemessener Punkt



125  
68      125  
67

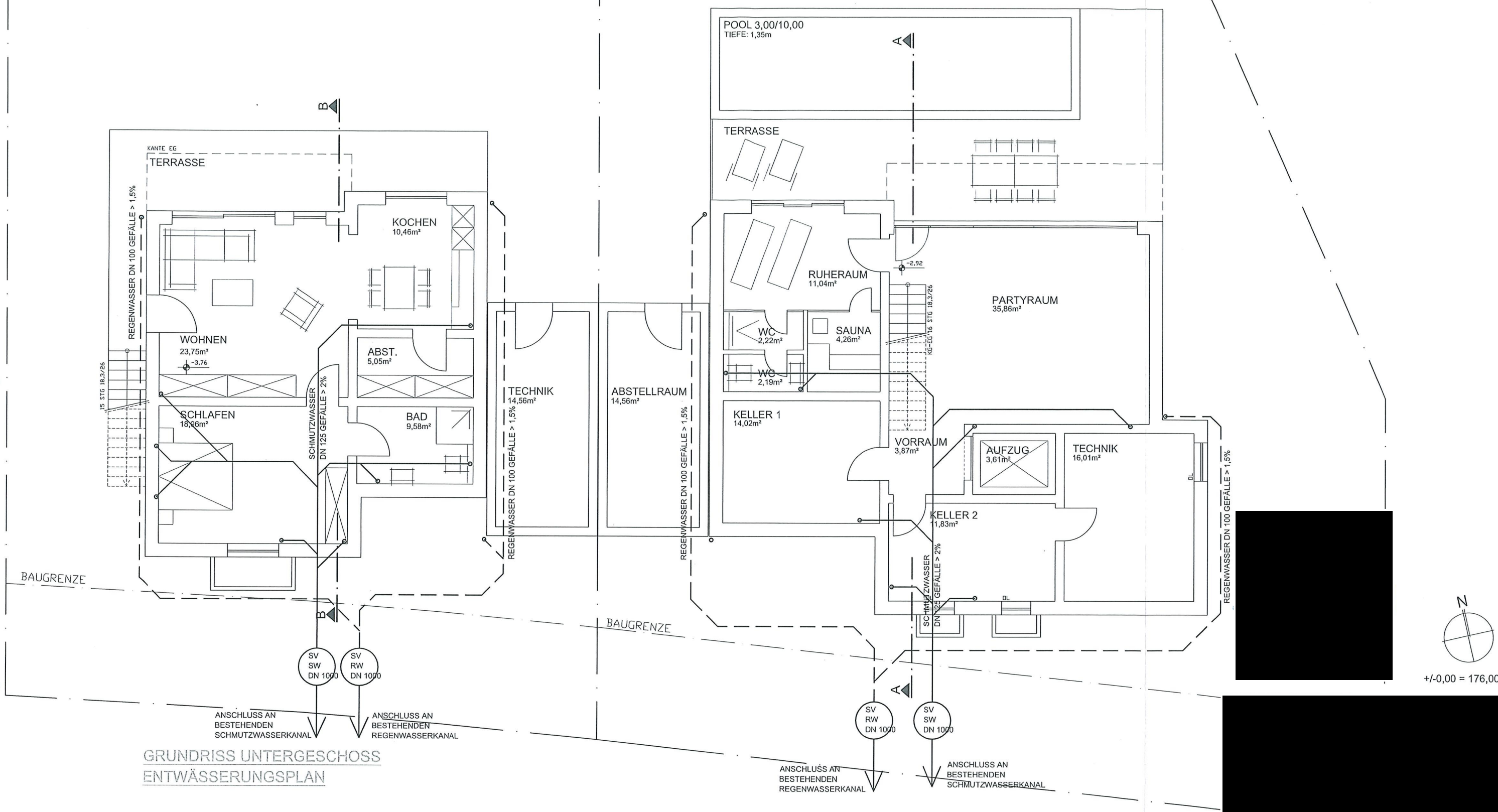


+/-0,00 = 176,00

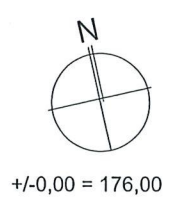


ABSTANDSFLÄCHENPLAN

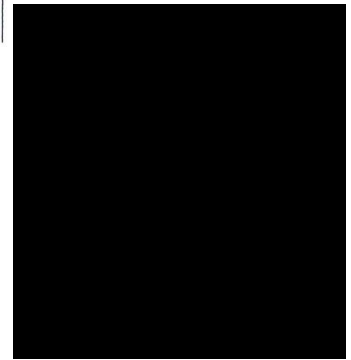
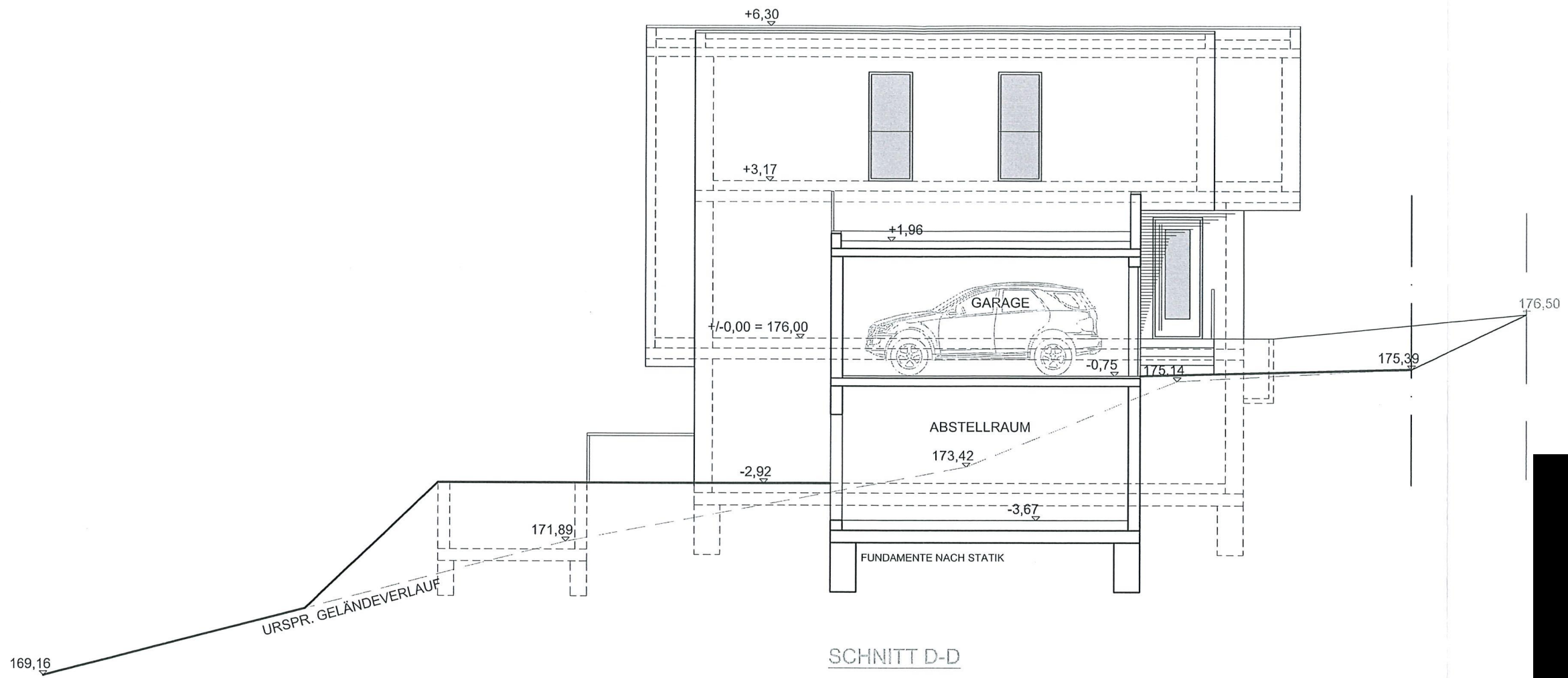
An der Mälzerei



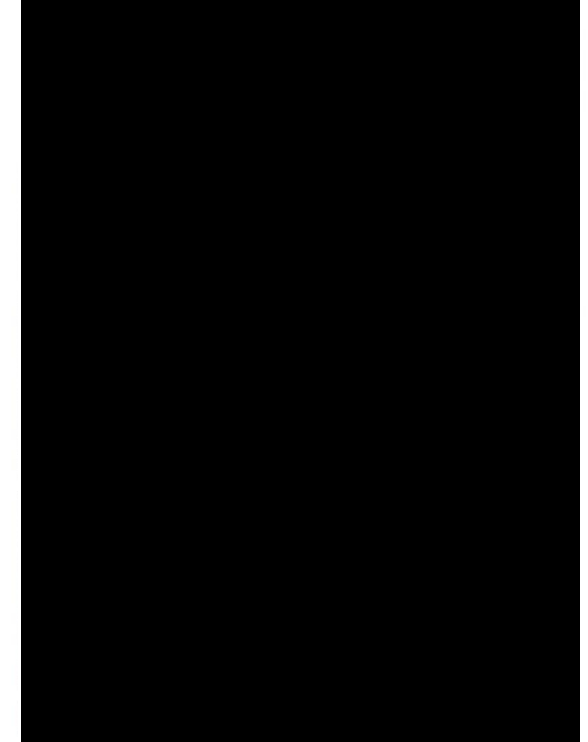
GRUNDRISS UNTERGESCHOSS  
ENTWÄSSERUNGSPLAN

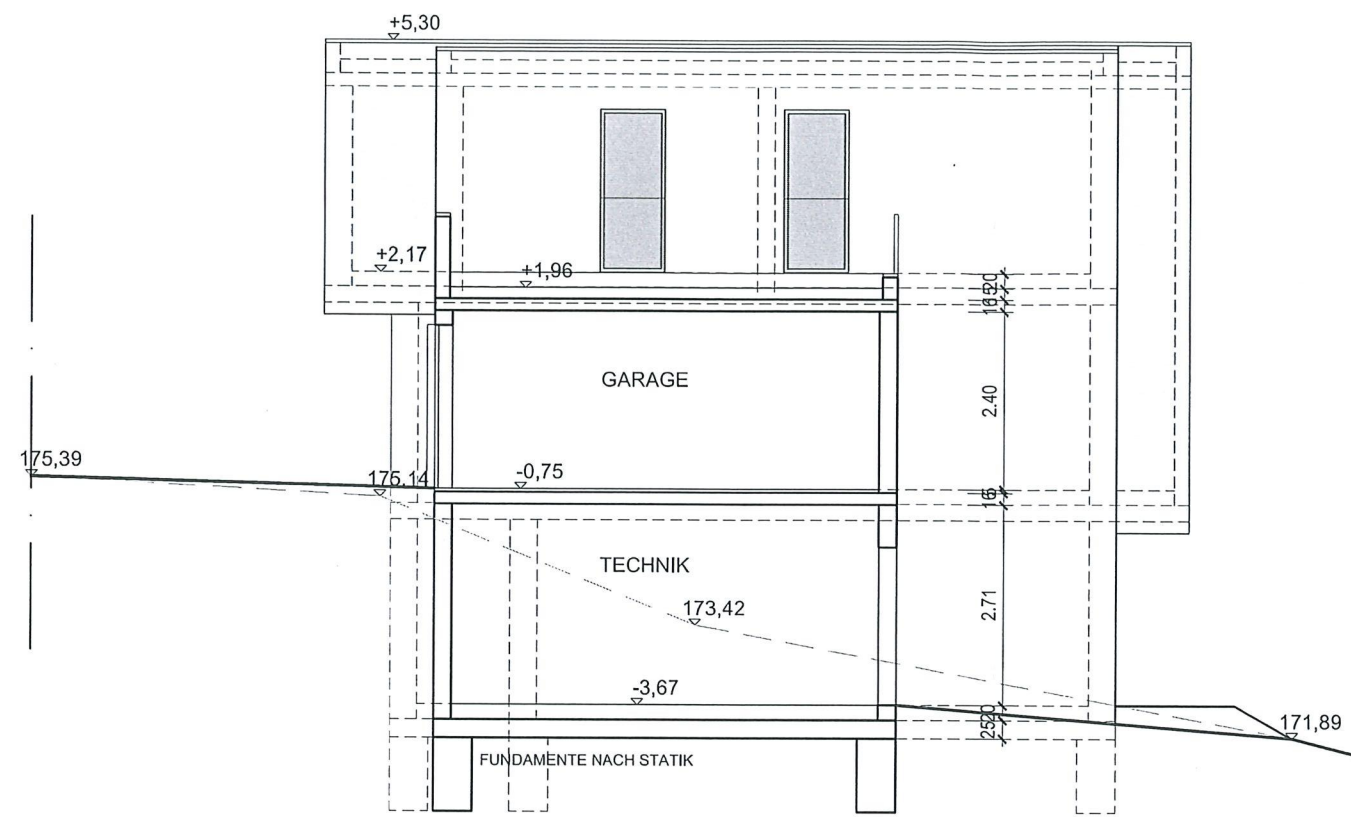


+/-0,00 = 176,00



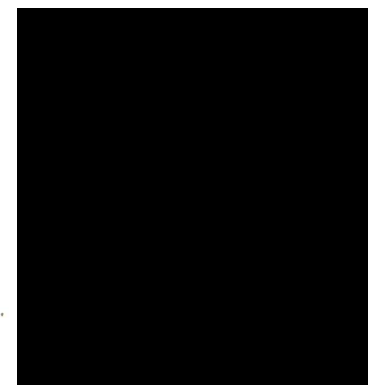
+/-0,00 = 176,00





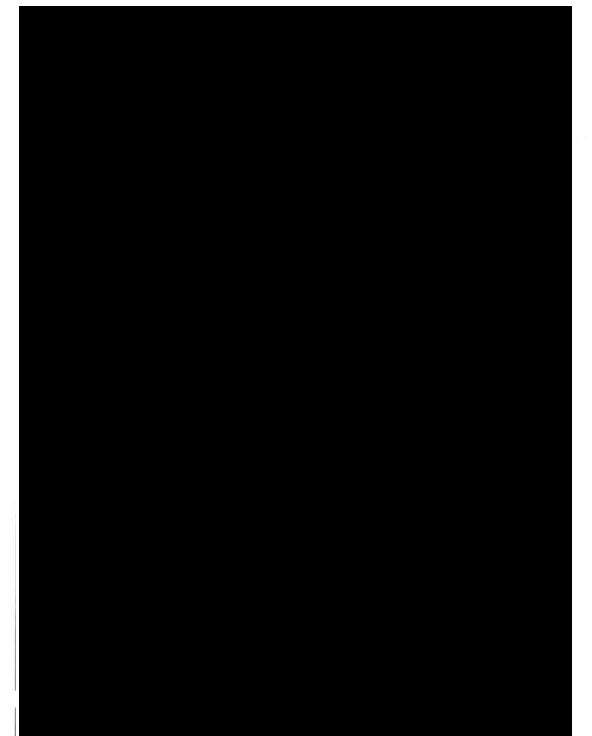
SCHNITT C-C

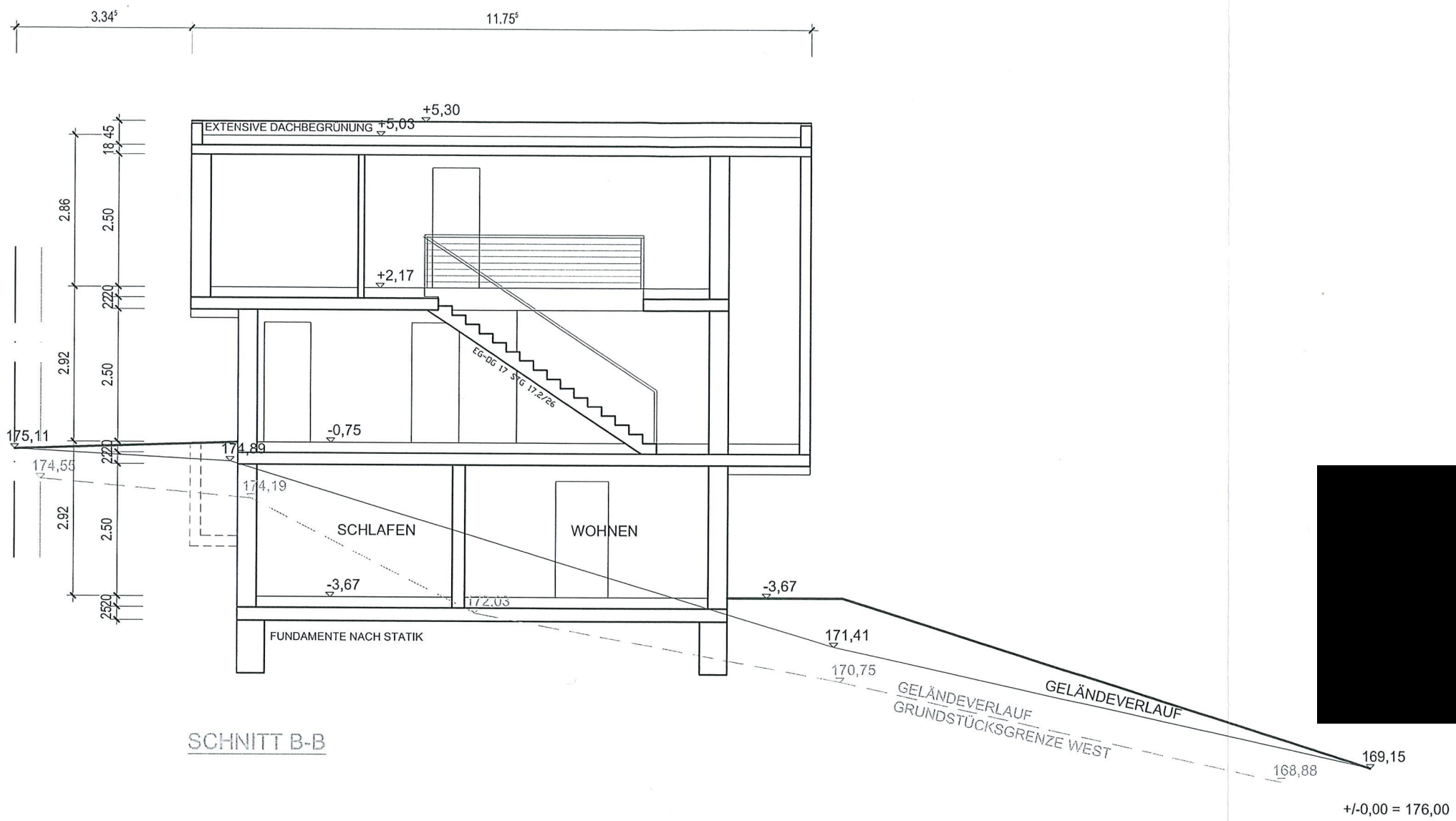
URSPR. GELÄNDEVERLAUF



169,16

+/-0,00 = 176,00

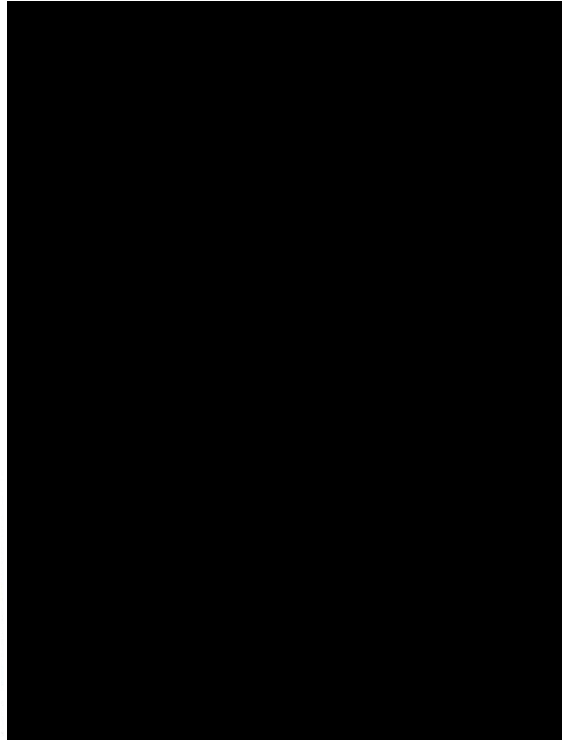


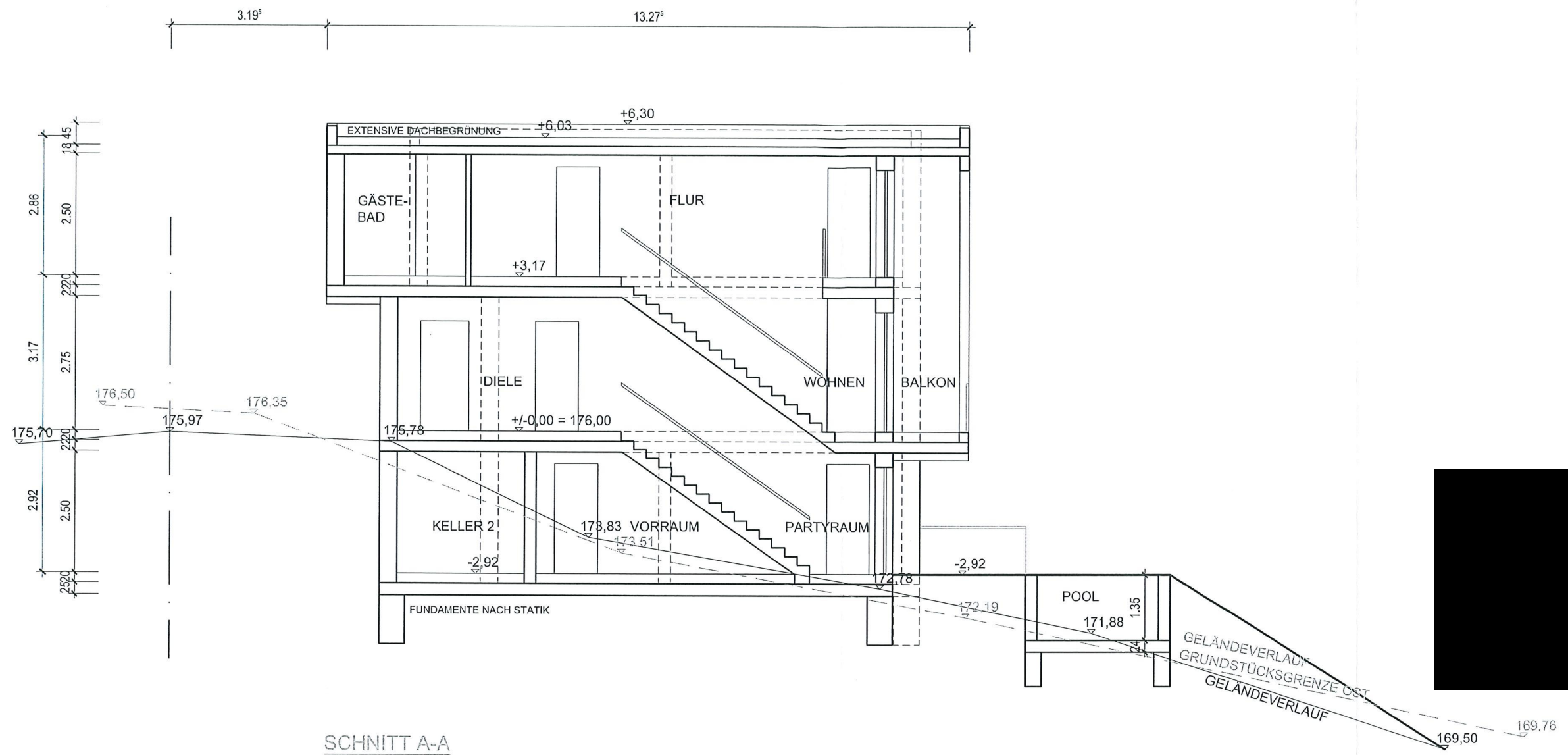


SCHNITT B-B



+/-0,00 = 176,00

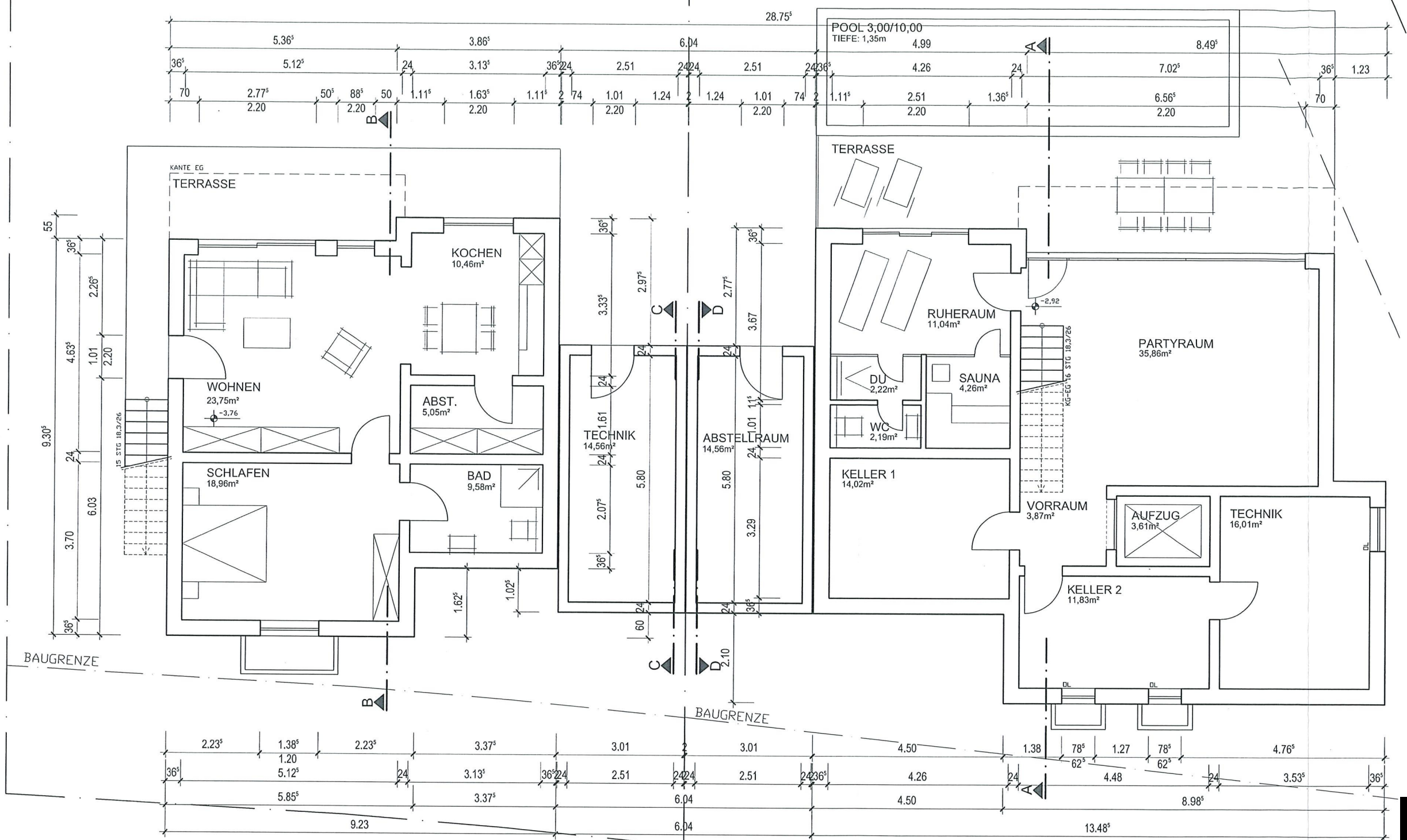




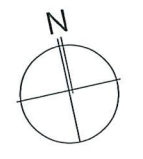
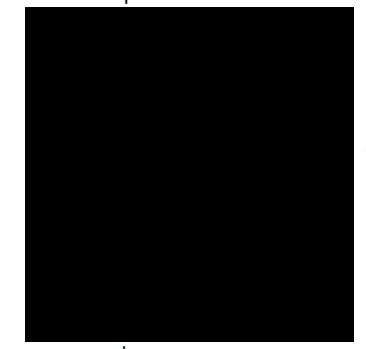
SCHNITT A-A

+/-0,00 = 176,00

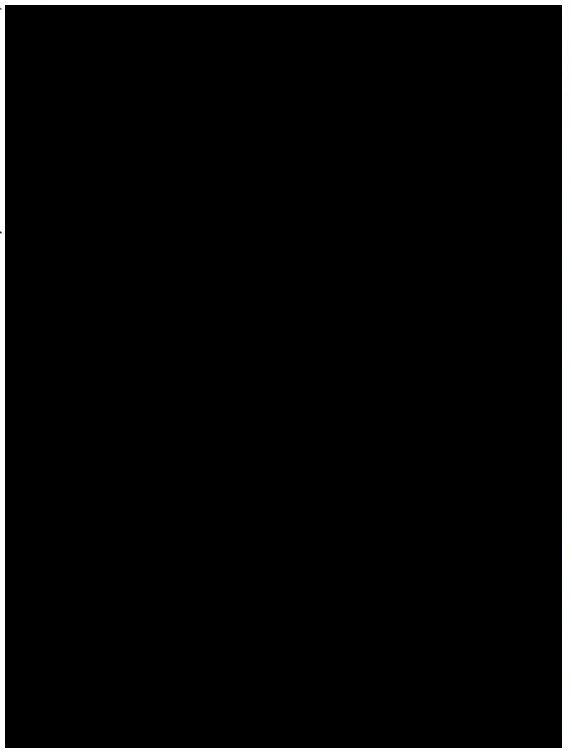


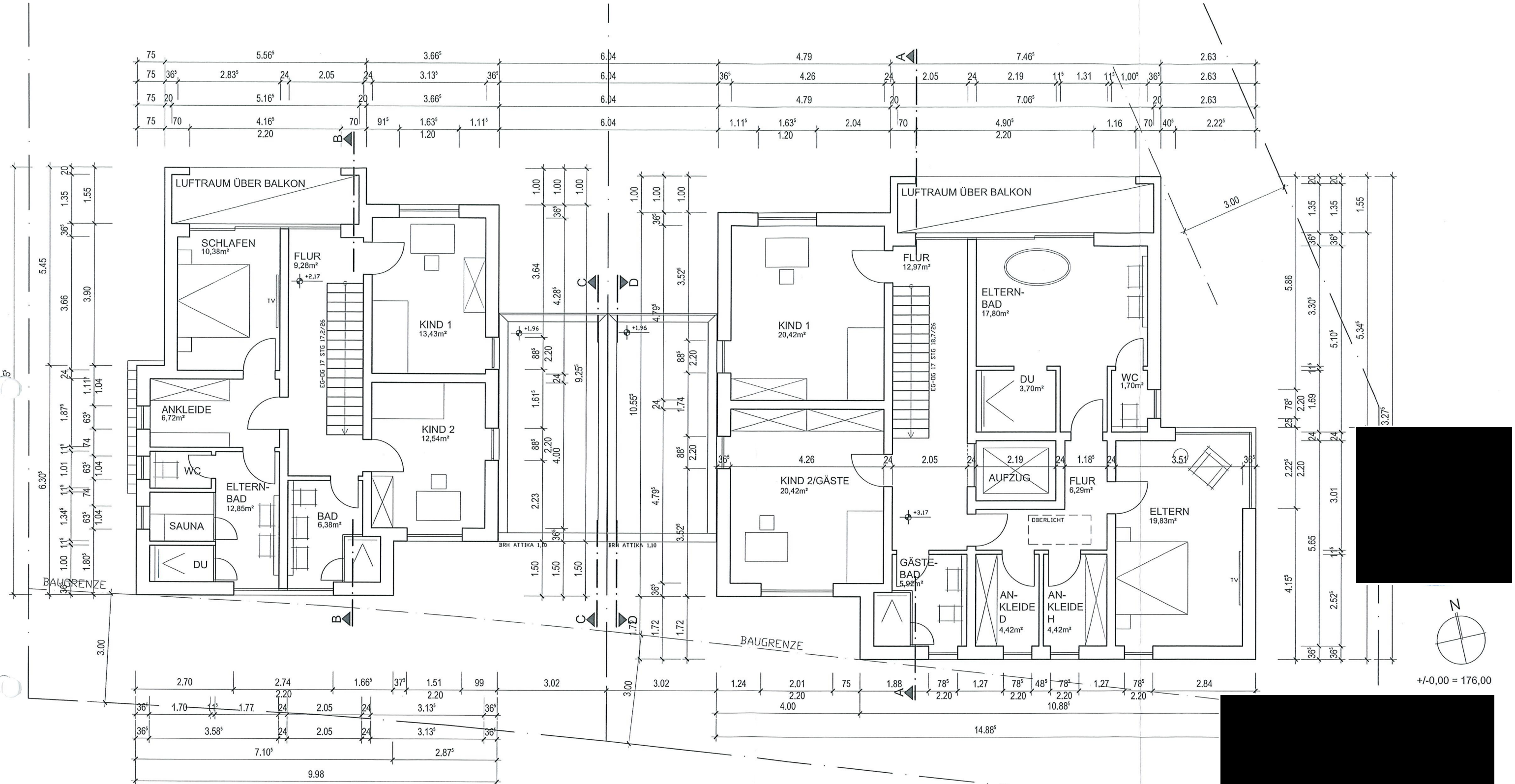


GRUNDRISS UNTERGESCHOSS

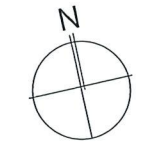


+/-0,00 = 176,00

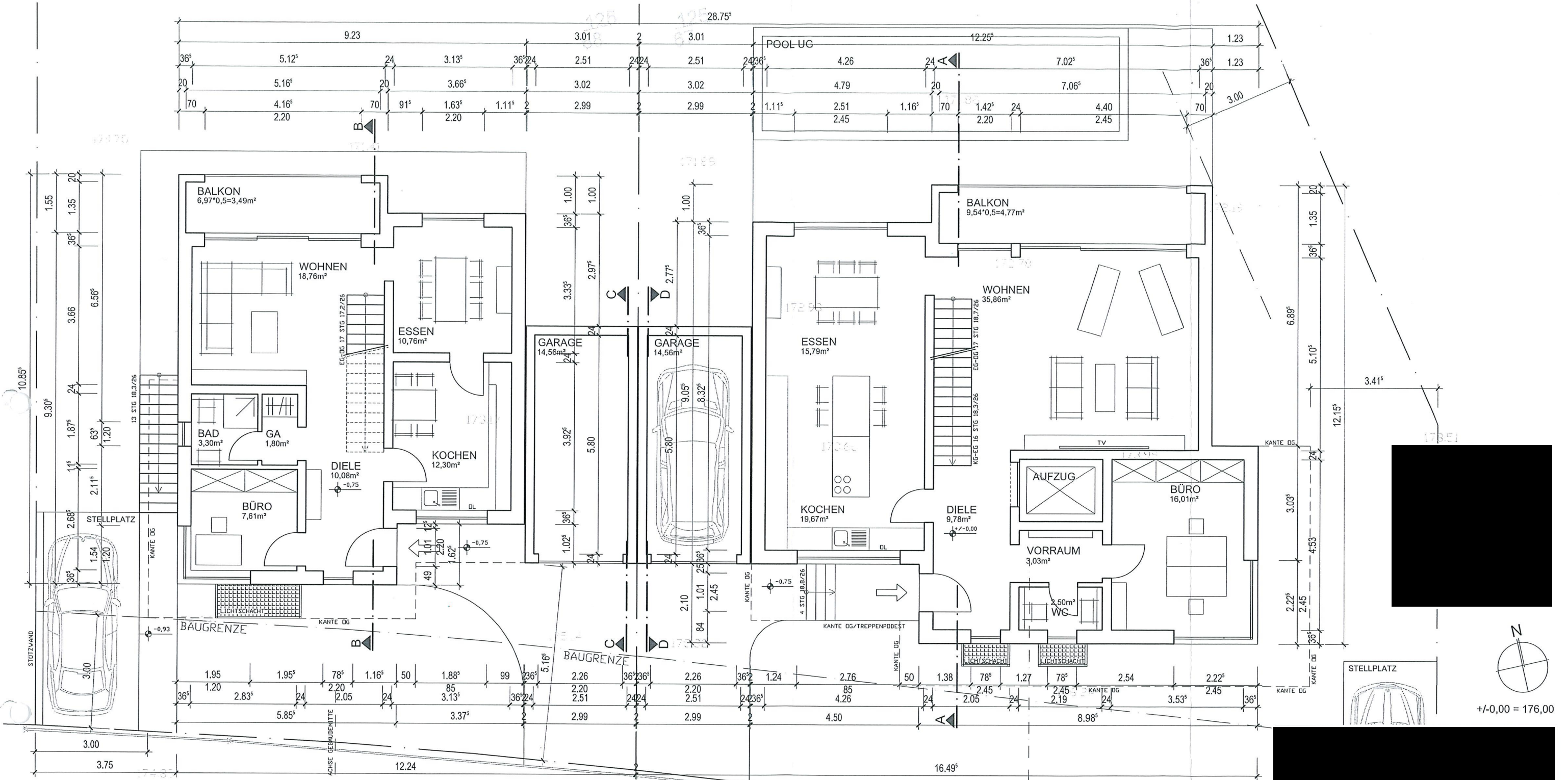




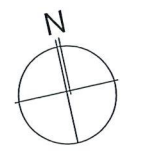
GRUNDRISS OBERGESCHOSS



+/-0,00 = 176,00



GRUNDRISS ERDGESCHOSS



+/-0,00 = 176,00

An der Mälzerei

17481

17539

17534

17525

17597

17594

17570

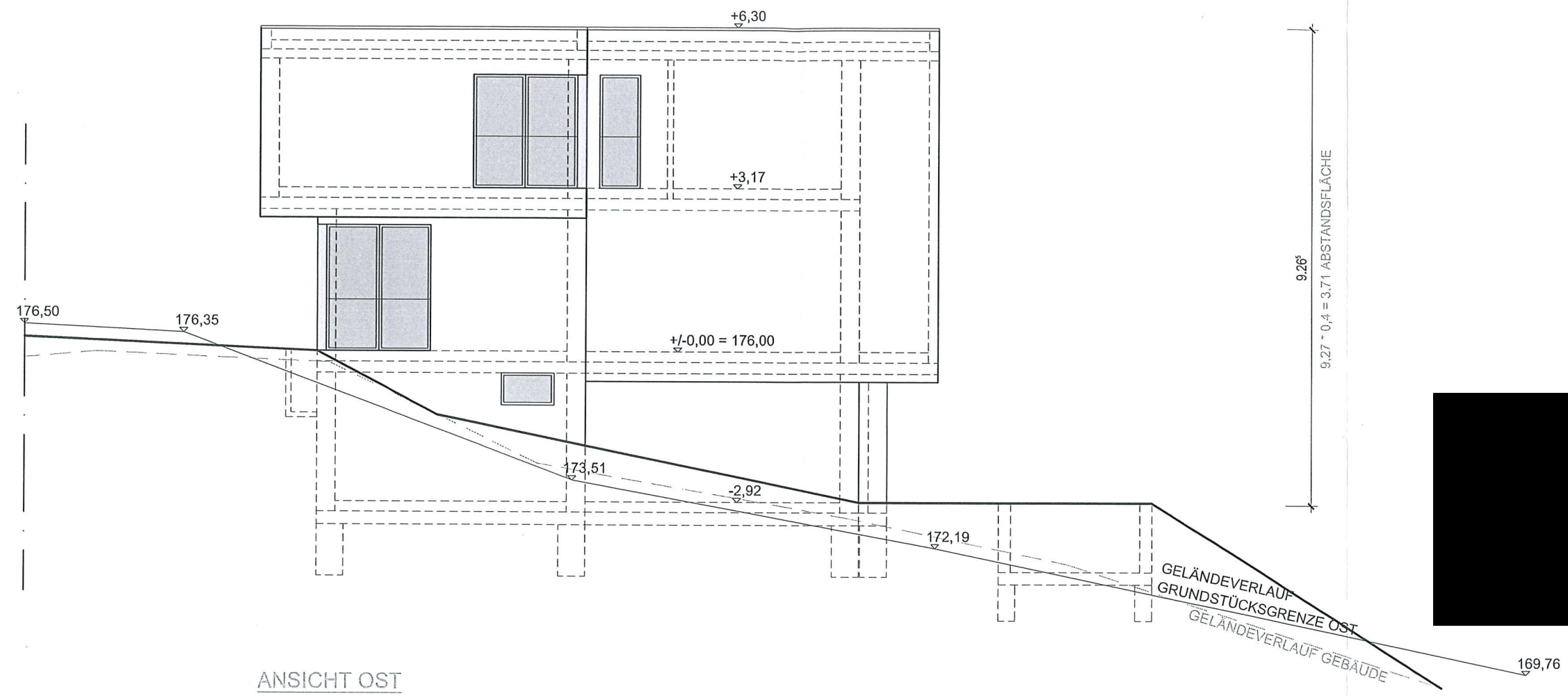
KS 172.81 ASwc. 36.01

<D 175.53

FS 172.25

17558

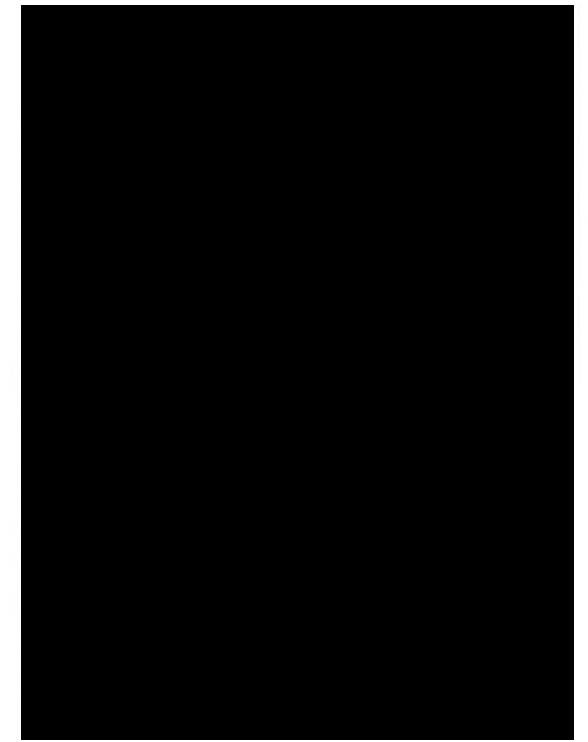
7.54  
7.55 \* 0.4 = 3.02 ABSTANDSFLÄCHE

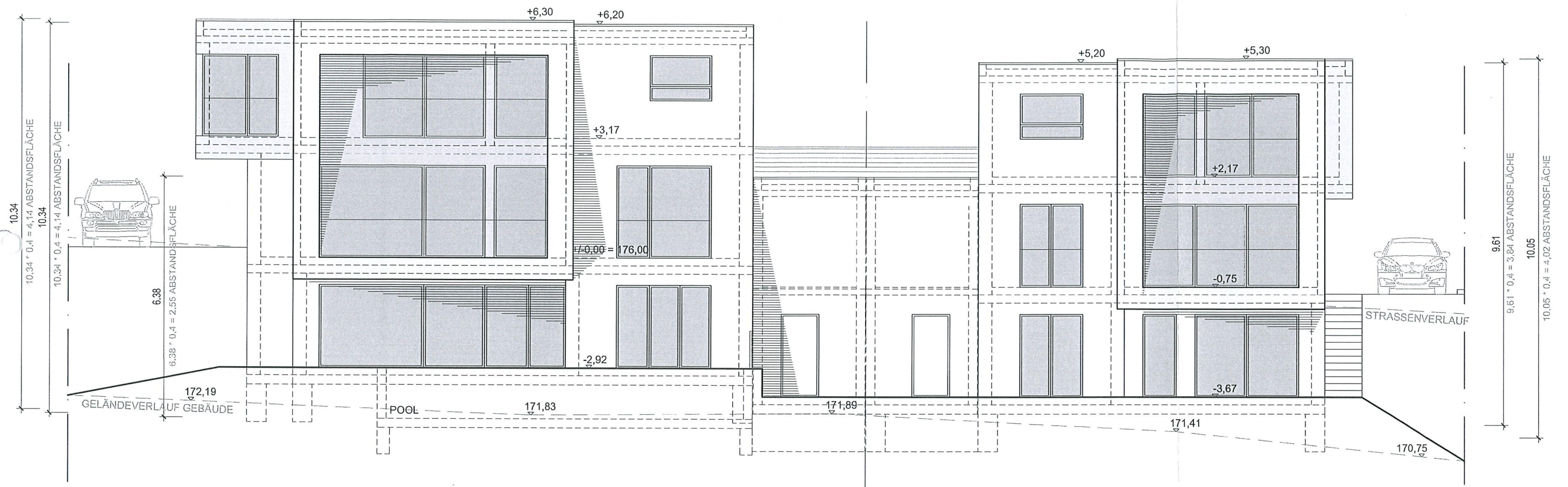


ANSICHT OST



+/-0,00 = 176,00

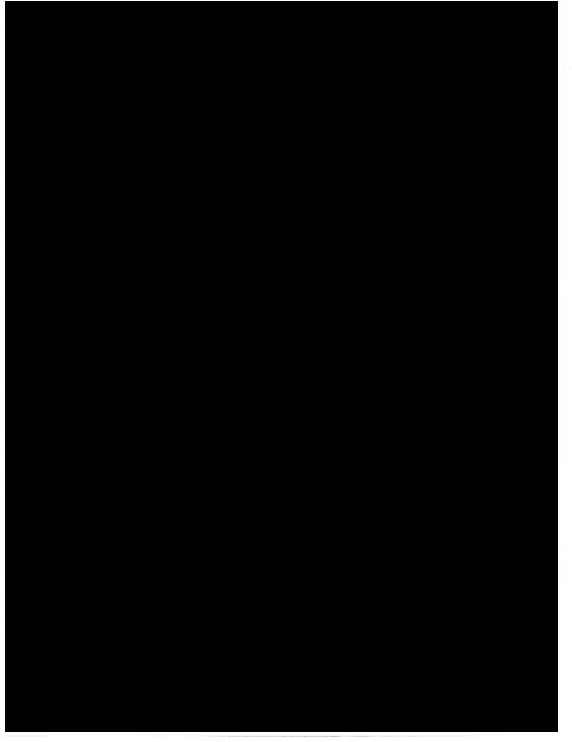


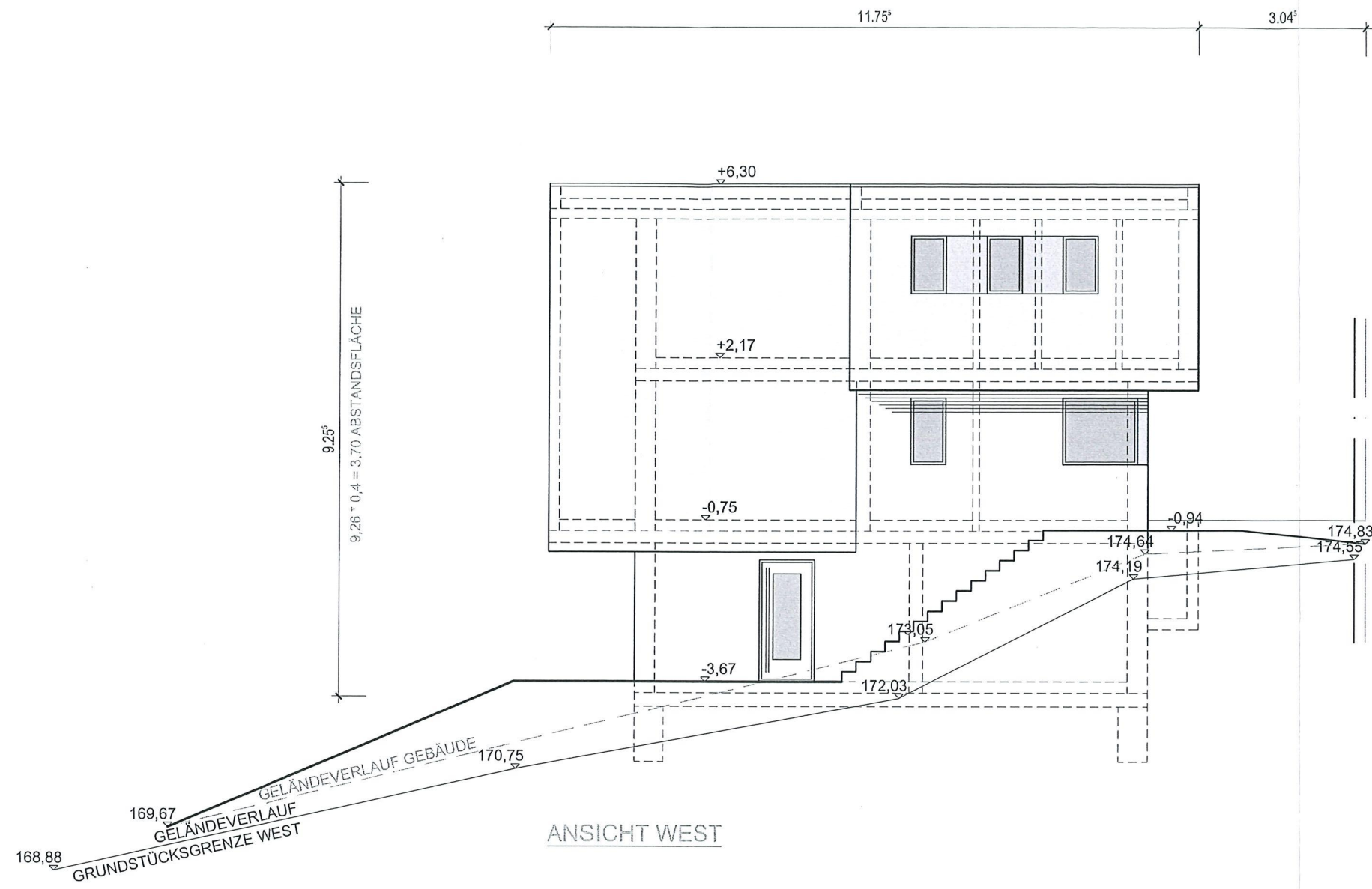


ANSICHT NORD

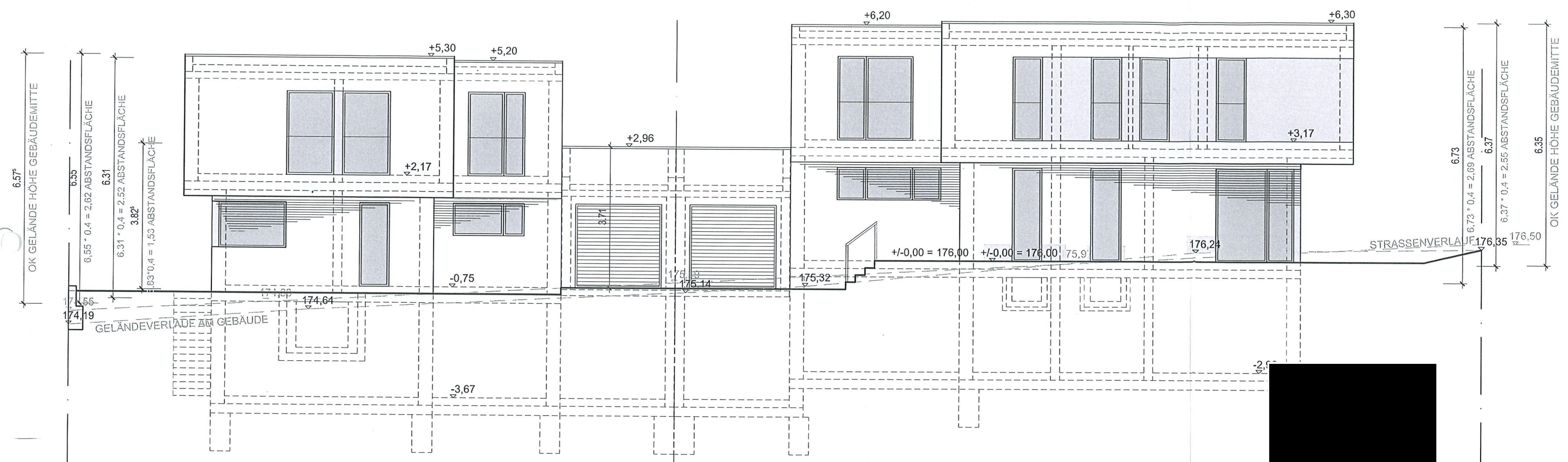


+/-0,00 = 176,00

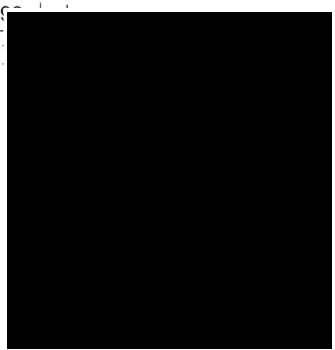




+/-0,00 = 176,00



ANSICHT SÜD



+/-0,00 = 176,00

