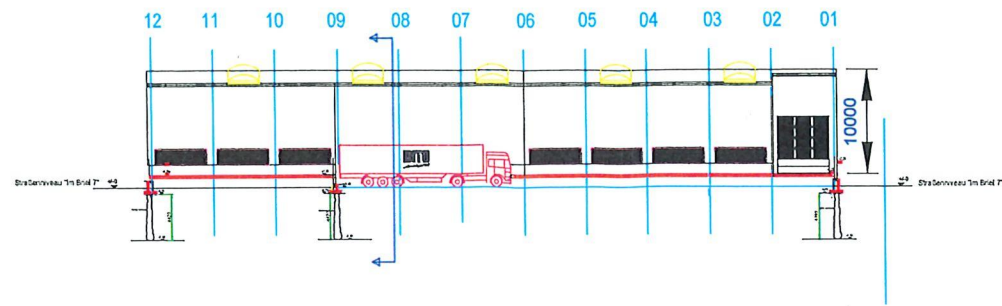
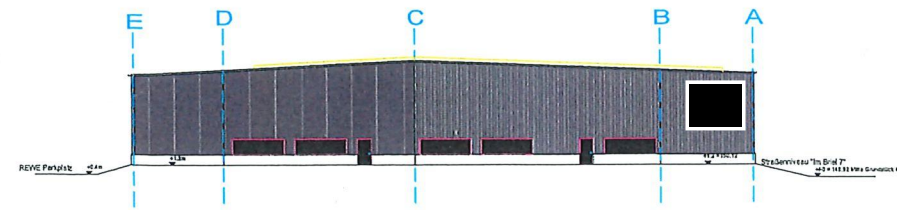


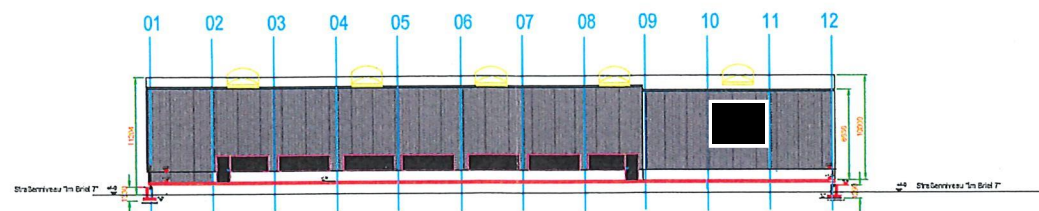
Ansicht Nord



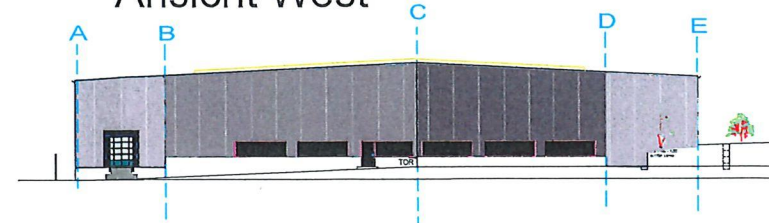
Ansicht Ost



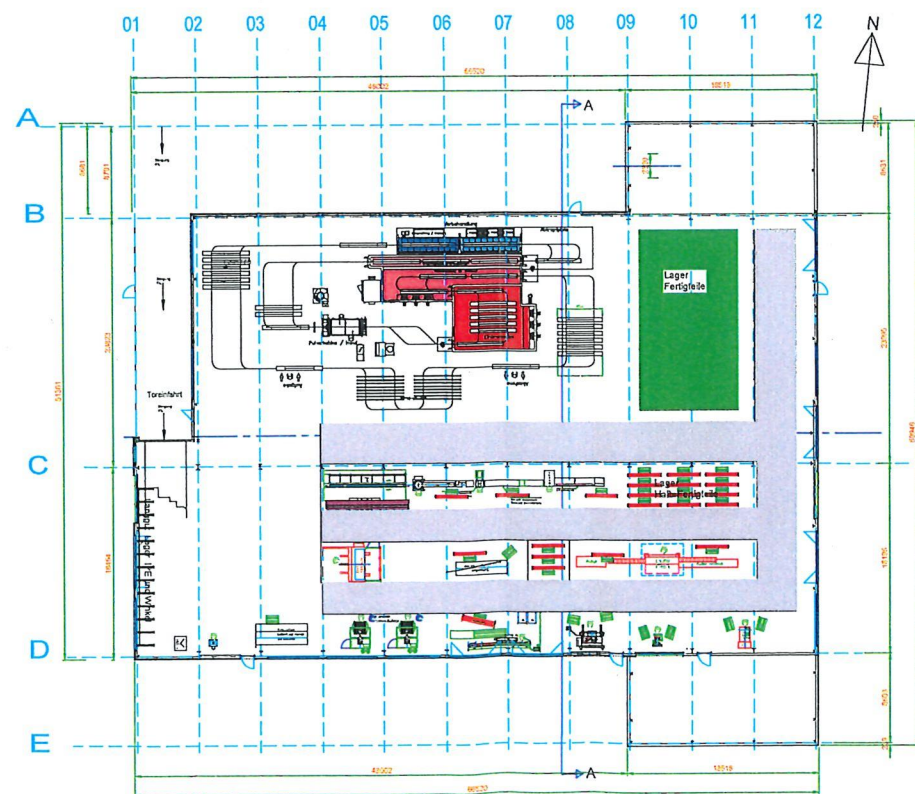
Ansicht Süd



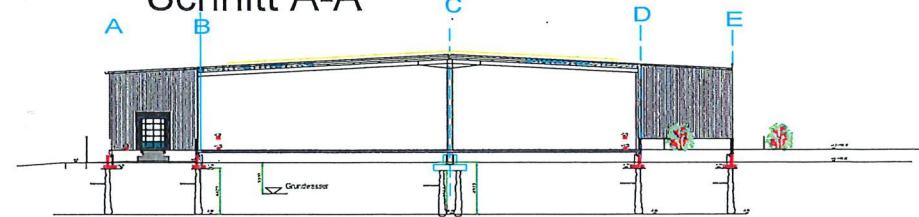
Ansicht West



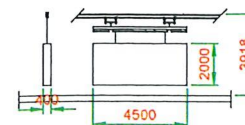
Grundriss



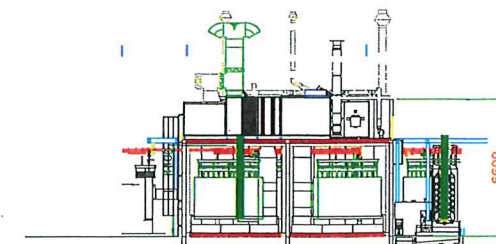
Schnitt A-A

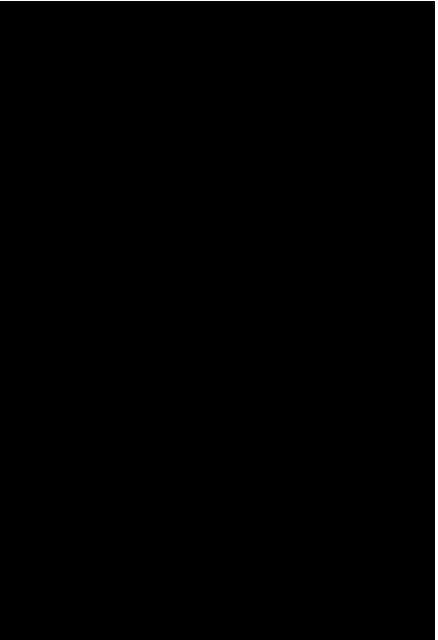
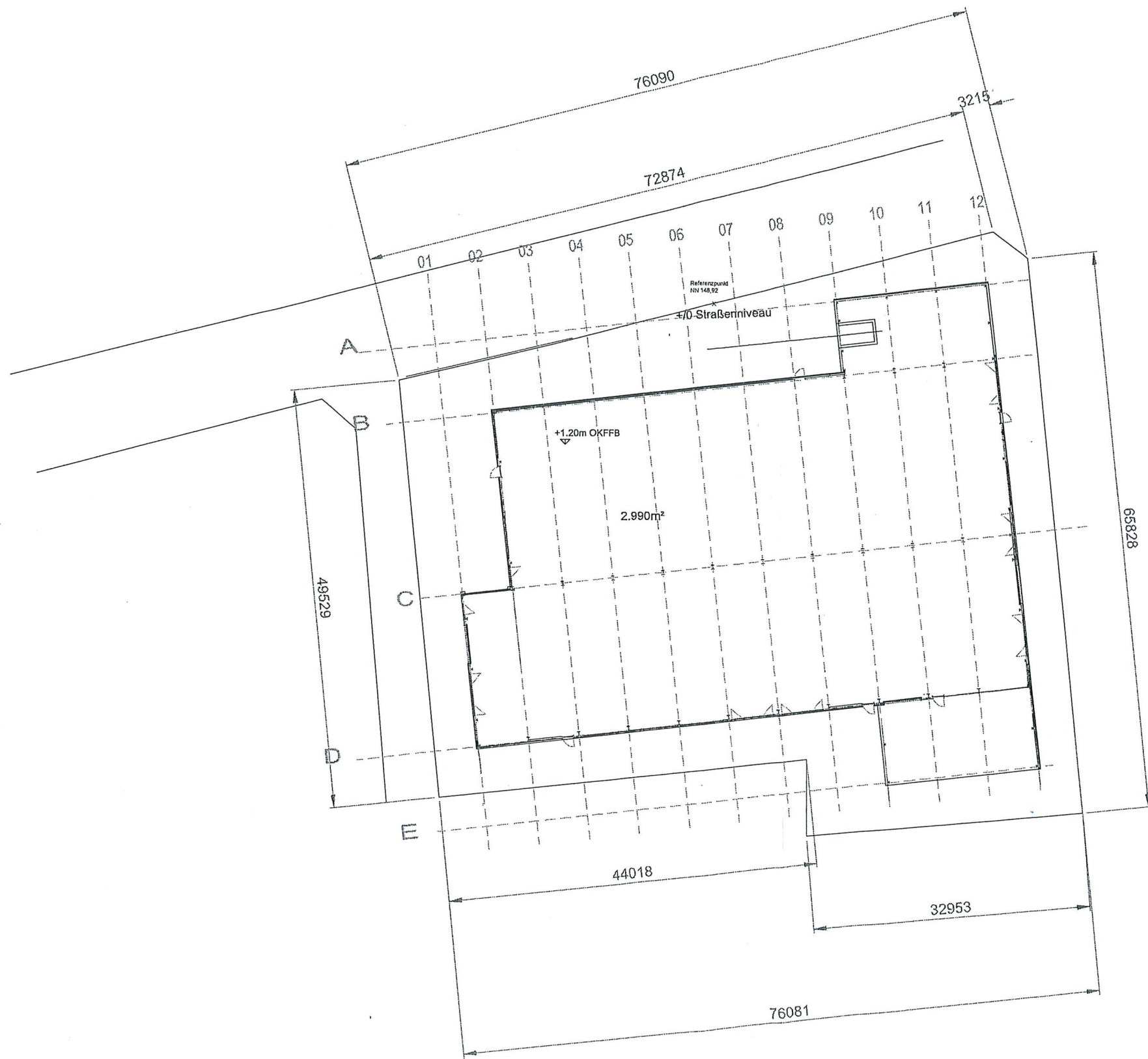


Planung
Schnitt Oberflächentechnik
max. Objekthöhe 2000mm

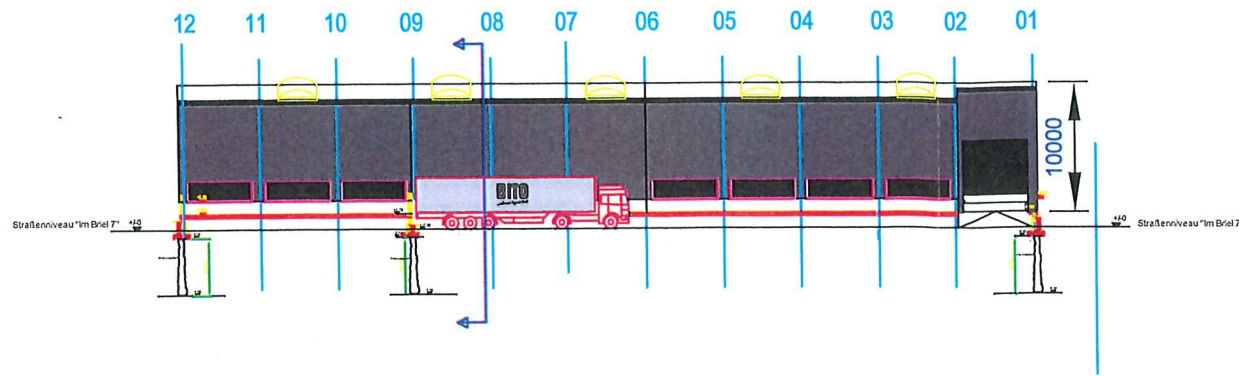


Schnitt VBH, HWT und PEO

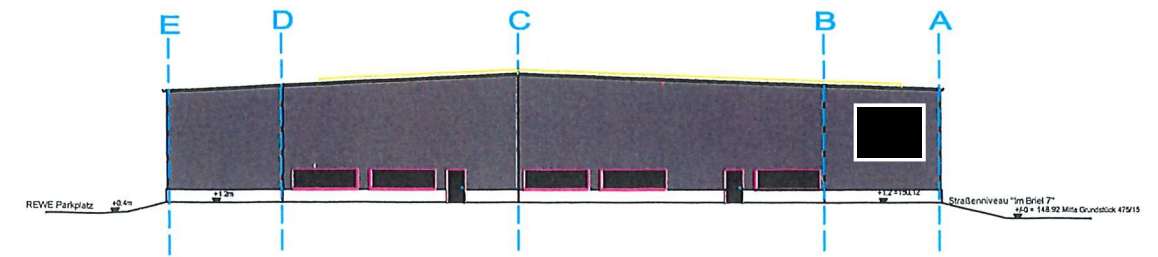




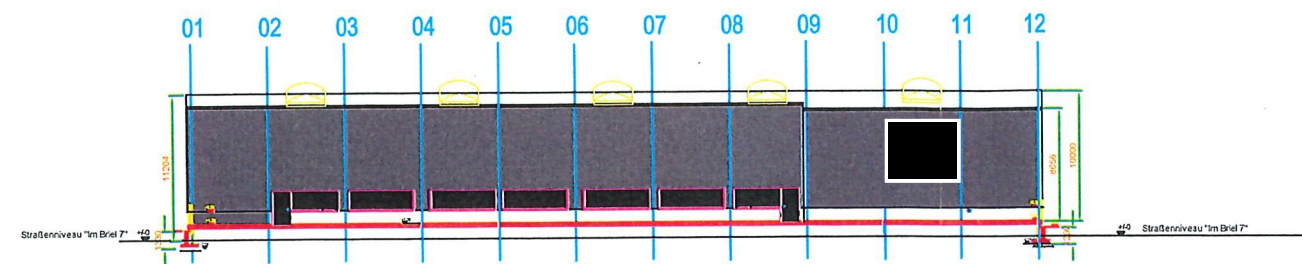
Ansicht Nord



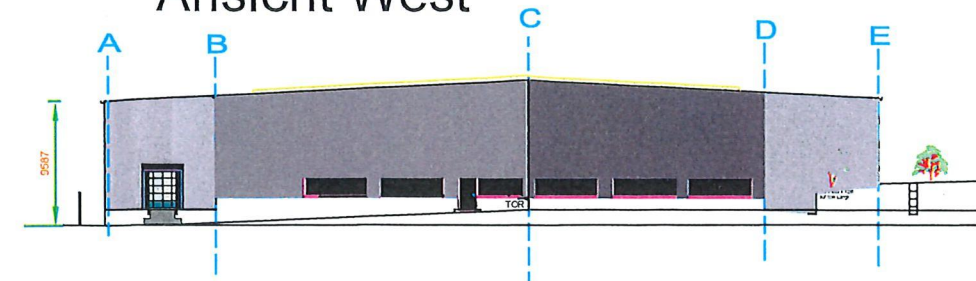
Ansicht Ost



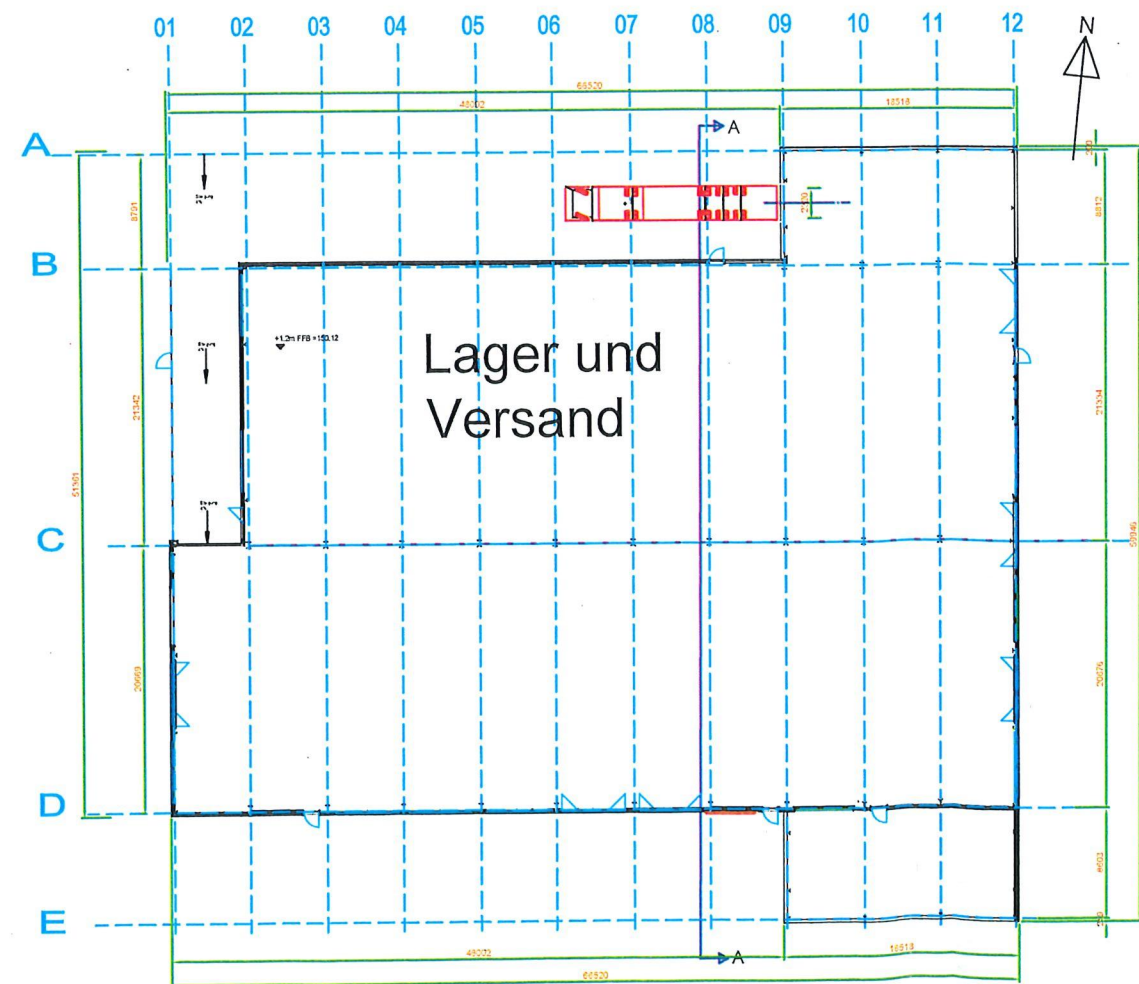
Ansicht Süd



Ansicht West



Grundriss



Schnitt A-A

